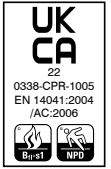
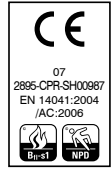
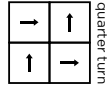
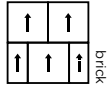


## technical specifications

	lateral®	code
Fibre	85% Polypropylene 15% Nylon	85% Polypropylene 15% Nylon
Dimensions	50cm x 50cm	50cm x 50cm
Pile Weight	950g/m <sup>2</sup>	1000g/m <sup>2</sup>
Total Weight	4200g/m <sup>2</sup>	4250g/m <sup>2</sup>
Total Thickness	7.8mm	8mm
Backing	<b>BioBase® recycled</b> backing (BS EN ISO 14021)	<b>BioBase® recycled</b> backing (BS EN ISO 14021)
Wear Classification	Heavy Contract	Heavy Contract
Flammability	Euroclass Bfl-s1	Euroclass Bfl-s1
Thermal Resistance	Tog Rating 0.62	Tog Rating 0.62
Castor Chair Rating	BS EN 985 Pass - suitable for continuous use	BS EN 985 Pass - suitable for continuous use
Static Loading	BS 4939: 1987 (2003) Recovery >80% (24hrs)	BS 4939: 1987 (2003) Recovery >80% (24hrs)
Dynamic Loading	BS ISO 2094: 1999 (2005) Loss <20% (1000 impacts)	BS ISO 2094: 1999 (2005) Loss <20% (1000 impacts)
Body Voltage Test	BS ISO 6356:2000 <2kV	BS ISO 6356:2000 <2kV
Colour Fastness To Light	BS EN ISO 105 - B02 Minimum grade 6	BS EN ISO 105 - B02 Minimum grade 6
Colour Fastness To Shampoo	BS 1006:UK-TB: 1990 Minimum Grade 4-5	BS 1006:UK-TB: 1990 Minimum Grade 5
Sound Absorption Coefficient	BS EN 354:2003	BS EN 354:2003
Reduction in Impact Noise	BS EN ISO 140-8: Part 8: 1998 18dB	BS EN ISO 140-8: Part 8: 1998 17dB
Reduction in Impact Noise at 1000Hz	BS EN ISO 140-8: Part 8: 1998 17.1dB	BS EN ISO 140-8: Part 8: 1998 16.1dB
Warranty	15 years	15 years
Number Of Tiles Per Box	16 (4m <sup>2</sup> )	16 (4m <sup>2</sup> )



## eco<sub>2</sub>matters®

We are committed to helping deliver a sustainable future, because we believe that what we do **matters**. To help us deliver on this commitment, we have developed **eco<sub>2</sub>matters®**, our sustainability principles, supported by independent 3rd party verification.



**Journey to Net Zero & Beyond**



**Positive Environmental Impact**



**Social Values & Well Being**

**lateral® | code** are extremely durable mixed ribbed carpet tiles. Made using Burmatex®'s unique **structure bonded®** technique and solution dyed fibres, **lateral® | code** are easy to maintain and feature **anti-fray/anti-ravel** technology. Widely used in the education and commercial sectors, **lateral® | code** complement each other to offer a **low embodied carbon**, sustainable flooring solution, perfect for heavy footfall environments.



**lateral® & code** are **low carbon**



**lateral® & code** feature **anti-fray/anti-ravel** technology



**lateral® & code** use **BioBase® recycled** backing



**Burmatex® reco<sub>2</sub>very** take back service provides a no landfill solution for your used tiles



**Burmatex®** products are made using 100% certified **renewable** electricity



**eco<sub>2</sub>matters®** declarations are independently 3rd party verified

**EPD**  
**Burmatex®** products are supported by 3rd party independently verified, product specific EPD's

**LEED**  
**Burmatex®** products contribute towards Leed accreditation

**SKA**  
**Burmatex®** products adhere to SKA standards

**WELL Building Standards**  
**Burmatex®** products contribute to WELL Building Standards



**n55 BIM** need a BIM object?  
all our products have BIM objects available on our website

need samples? scan the QR code visit [www.burmatex.co.uk](http://www.burmatex.co.uk) call +44 (0) 1924 262525 email [samples@burmatex.co.uk](mailto:samples@burmatex.co.uk)



contact us  
T +44 (0) 1924 262 525  
email: [sales@burmatex.co.uk](mailto:sales@burmatex.co.uk)

Burmatex Ltd  
Victoria Mills, The Green  
Ossett, West Yorkshire  
WF5 0AN, United Kingdom

[www.burmatex.co.uk](http://www.burmatex.co.uk)

LRV values for **lateral**<sup>®</sup>

Product code	Product colour name	CIE Y
1801	carbon steel	2.30
1802	zinc asphalt	3.73
1803	concrete jungle	6.20
1805	diamond dust	9.98
1809	ink stone	5.43
1812	indigo snake	3.77
1813	lavender oil	6.93
1814	blue monday	4.41
1830	lime street	9.53
1834	soap stone	11.79
1839	mandarin duck	13.48
1845	scarlet runner	5.64
1882	turquoise mountain	10.44
1883	emerald coast	5.63
1886	pink diamond	4.95
1887	gold quest	13.87
1890	purple emperor	4.48
1891	pewter cloud	14.76

LRV values for **code**

Product code	Product colour name	CIE Y
12901	sun burst	6.21
12902	lime zest	5.26
12904	scarlet fever	3.44
12906	metal shock	5.75
12912	cool stone	6.43
12916	pink panther	3.70
12918	rolled gold	6.16
12920	deep purple	3.11
12922	turquoise opal	6.25
12923	ink film	3.86
12924	lavender seed	4.26
12925	emerald city	3.98
12926	pewter track	7.04
12927	blue reef	3.12
12928	night suede	2.72
12929	pitch black	1.70
12930	diamond coal	6.45
12931	indigo stack	2.27