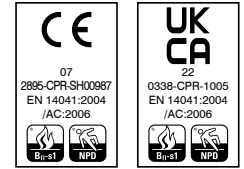
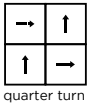
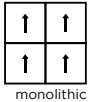


technical specifications

Yarn	100% Econyl[®] regenerated recyclable solution dyed nylon
Dimensions	50cm x 50cm
Pile Weight	1300g/m ²
Total Weight	4550g/m ²
Pile Height	7.0mm
Total Thickness	9.5mm
Construction	Tufted 1/10th gauge cut pile twist
Pile Density	165,354/m ²
Backing	BioBase[®] recycled backing (recycled BS EN ISO 14021)
Wear Classification	Class 33 heavy commercial use (BS EN 1307)
Luxury Rating Class	LC5
Flammability	Euroclass Bfl-s1
Thermal Resistance	Tog Rating 0.93
Castor Chair Rating	BS EN 985 Pass - suitable for continuous use
Hexapod	BS ISO 10361: Method B:2000 3 to 4
Static Loading	BS 4939: 1987 (2003) Recovery >80% (24hrs)
Dynamic Loading	BS ISO 2094: 1999 (2005) Loss <20% (1000 impacts)
Body Voltage Test	BS ISO 6356:2000 <2kV
Colour Fastness To Light	BS EN ISO 105 - B02 Minimum Grade 6
Colour Fastness To Shampoo	BS 1006:UK-TB: 1990 Minimum Grade 4-5
Sound Absorption Coefficient	BS EN 354:2003
Reduction in Impact Noise	BS EN ISO 10140-3:2010 28dB
Reduction in Impact Noise at 1000Hz	BS EN ISO 10140-3:2010 47.0dB
VOC	A+
Warranty	15 years
Number Of Tiles Per Box	14 (3.5m ²)









eco₂matters[®]

We are committed to helping deliver a sustainable future, because we believe that what we do **matters**. To help us deliver on this commitment, we have developed **eco₂matters[®]**, our sustainability principles, supported by independent 3rd party verification.



Made from 100% **Econyl[®] regenerated recyclable** solution dyed nylon yarn and our unique **BioBase[®] recycled** backing, **origin** is **low carbon**. The commercial colour palette of 10 is sophisticated and refined, inspired by coastal walks and views. This cut pile range works both as a stand-alone product, and with others from our product portfolio, to enhance any commercial setting.

 <p>low carbon</p>	<p>origin is low carbon</p>	 <p>take back service</p>	<p>Burmatex[®] reco₂very take back service provides a no landfill solution for your used tiles</p>
 <p>100% Econyl[®]</p>	<p>origin is made from 100% Econyl[®] regenerated recyclable yarn</p>	 <p>100% certified renewable</p>	<p>Burmatex[®] products are made using 100% certified renewable electricity</p>
 <p>BioBase[®] recycled backing</p>	<p>origin uses BioBase[®] recycled backing</p>	 <p>independently 3rd party verified</p>	<p>eco₂matters[®] declarations are independently 3rd party verified</p>
<p>EPD</p> <p>Burmatex[®] products are supported by 3rd party independently verified, product specific EPD's</p>	<p>LEED</p> <p>Burmatex[®] products contribute towards Leed accreditation</p>	<p>SKA</p> <p>Burmatex[®] products adhere to SKA standards</p>	<p>WELL Building Standards</p> <p>Burmatex[®] products contribute to WELL Building Standards</p>



BIM need a BIM object?
all our products have BIM objects available on our website

need samples? scan the QR code visit www.burmatex.co.uk call +44 (0) 1924 262525 email samples@burmatex.co.uk



contact us
T +44 (0) 1924 262 525
email: sales@burmatex.co.uk

Burmatex Ltd
Victoria Mills, The Green
Ossett, West Yorkshire
WF5 0AN, United Kingdom

www.burmatex.co.uk

LRV values

Product code	Product colour name	CIE Y
33201	cloud	20.75
33202	pearl	18.49
33203	pebble	10.58
33204	shale	7.67
33205	mussel	5.24
33206	gull	2.57
33207	gorse	12.86
33208	surf	6.82
33209	wave	2.10
33210	heather	4.16