

Burmatex®

MANUFACTURERS OF CREATIVE FLOORING 



dapple®

carbon neutral carpet tiles



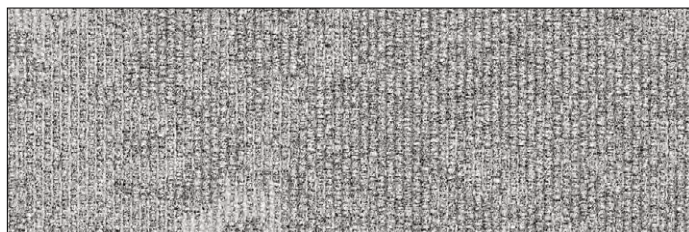
Made from Universal Fibers® Thrive® matter yarn, the **world's first carbon negative recycled** yarn, and our unique **BioBase® recycled** backing, **dapple®** is **carbon neutral**.

dapple®'s organic design echoes the effect of light being filtered through trees and scattered onto the forest floor. Inspired by nature, the 12 colour palette helps you connect your built interior to the natural environment.

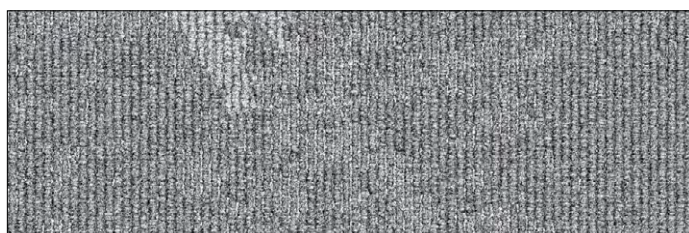




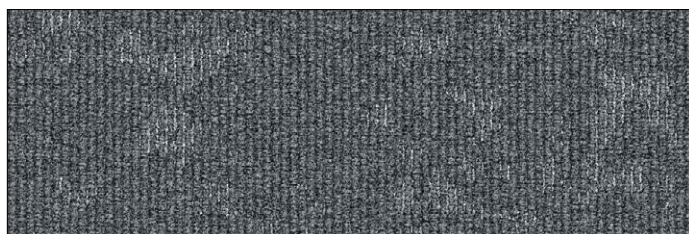
dapple® colour palette



34301 silver gleam LRV: Y 20.26



34302 cool breeze LRV: Y 13.64



34303 grey zephyr LRV: Y 8.75



34310 inky shade LRV: Y 5.93



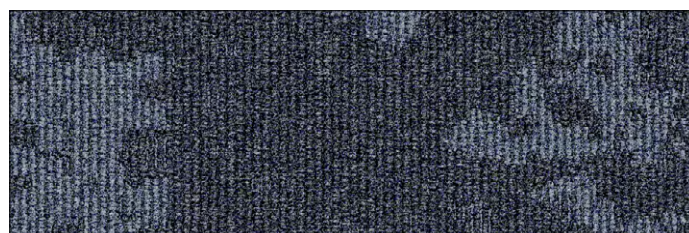
34311 moonlit glow LRV: Y 5.02



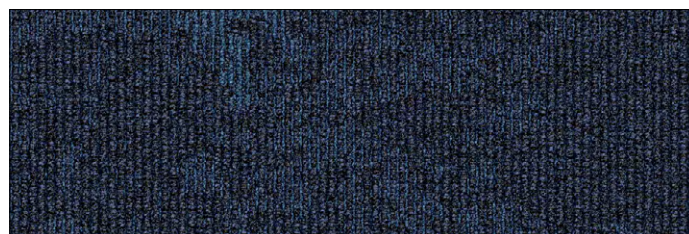
34312 dark nimbus LRV: Y 2.59



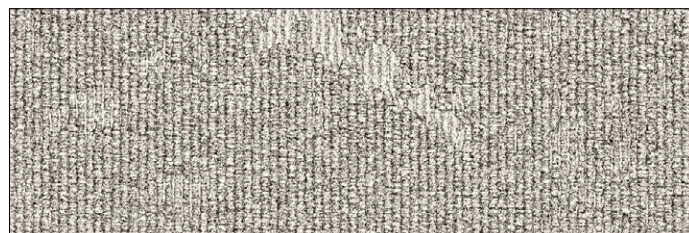
34307 luminous blue LRV: Y 7.01



34309 midnight violet LRV: Y 5.25



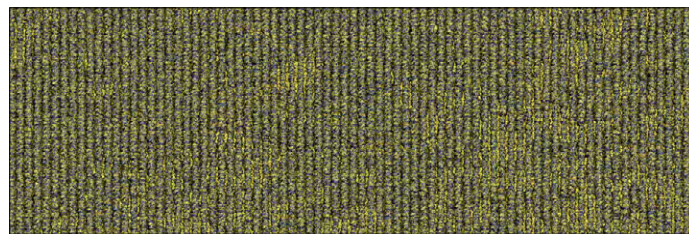
34308 vivid navy LRV: Y 3.47



34305 spring seed LRV: Y 24.96



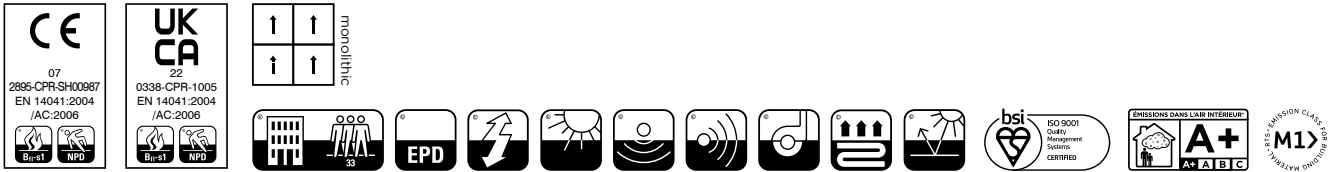
34306 airy celadon LRV: Y 18.58



34304 golden hour LRV: Y 13.45

technical specifications

Yarn	Universal Fibers® Thrive® matter carbon negative recycled yarn
Dimensions	50cm x 50cm
Pile Weight	678g/m ²
Total Weight	4100g/m ²
Total Thickness	7.0mm
Construction	Tufted 1/12th gauge loop
Pile Density	236,220/m ²
Backing	BioBase® recycled backing (recycled BS EN ISO 14021)
Wear Classification	Class 33 heavy commercial use (BS EN 1307)
Castor Chair Rating	Pass - continuous use (BS EN 985)
Luxury Rating Class	LC2
Flammability	Euroclass Bfl-s1
Static loading	BS 4939: 1987 (2003) Recovery >80% (24hrs)
Reduction in Impact Noise	BS EN ISO 10140-3:2010 24dB
VOC	Class A+
Warranty	15 years



eco₂matters®

We are committed to helping deliver a sustainable future, because we believe that what we do **matters**. To help us deliver on this commitment, we have developed **eco₂matters®**, our sustainability principles, supported by independent 3rd party verification.



Journey to Net Zero & Beyond



Positive Environmental Impact



Social Values & Well Being

Made from Universal Fibers® Thrive® matter yarn, the **world's first carbon negative recycled** yarn, and our unique **BioBase® recycled** backing, **dapple®** is **carbon neutral**. **dapple®**'s organic design echoes the effect of light being filtered through trees and scattered onto the forest floor. Inspired by nature, the 12 colour palette helps you connect your built interior to the natural environment.



carbon neutral

dapple® is **carbon neutral**



take back service

Burmatex® reco₂very take back service provides a no landfill solution for your used tiles



carbon negative recycled yarn

dapple® uses **carbon negative recycled** yarn



100% certified renewable

Burmatex® products are made using 100% certified **renewable** electricity



BioBase® backing

dapple® uses **BioBase® recycled** backing



independently 3rd party verified

eco₂matters® declarations are independently 3rd party verified

EPD

Burmatex® products are supported by 3rd party independently verified, product specific EPD's

LEED

Burmatex® products contribute towards Leed accreditation

SKA

Burmatex® products adhere to SKA standards

WELL Building Standards

Burmatex® products contribute to WELL Building Standards



need a BIM object?

all our products have BIM objects available on our website

For more information about
dapple[®] **carbon neutral** carpet tiles
Visit www.burmatex.co.uk/dapple

Need **advice**? Help with the **design**?
Call your Business Area Manager

Need an dapple[®] shadecard or samples?



Scan the QR code
Call +44 (0) 1924 262525
Email samples@burmatex.co.uk

Burmatex[®]

MANUFACTURERS OF CREATIVE FLOORING 

KEEP IN TOUCH



Burmatex Ltd
Victoria Mills, The Green,
Ossett, West Yorkshire
WF5 0AN