

Burmatex®

MANUFACTURERS OF CREATIVE FLOORING 

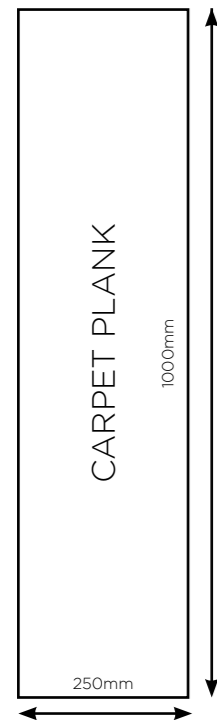
TIVOLI MIST

tile and plank tufted loop pile

tivoli mist palm springs & baffin island
with tivoli cali coral & antigua steel



tivoli mist is available in tile and plank



Low Level Loop

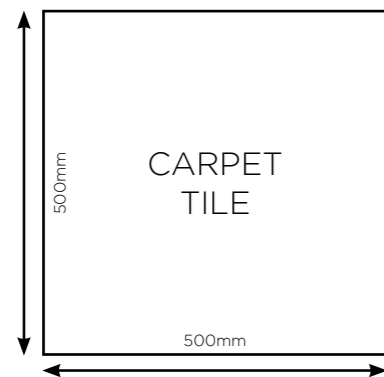
Yarn: 100% Solution Dyed Nylon (Polyamide-PA)

Pile weight: 600g/m²

Total weight: 4050g/m²

Total thickness: 6.5mm

Wear classification: BS EN 1307 Heavy Commercial Use Class 33





tivoli mist baffin island & havana town with
tivoli antigua steel & st lucia night

tivoli mist offers a flexible range of commercial carpet tiles, designed to provide creativity, colour and individuality.

With colour pairings that blend seamlessly together, **tivoli mist** affords the possibility of transitioning from one zoned area to another without the use of hard lines.

Made using 100% solution dyed nylon and achieving class 33 heavy commercial use in technical testing, the product has the durability of the core tivoli range, with the added diversity of a multitude of installation design options.



tivoli mist polar drift & south beach with
tivoli tiki yellow & dominica dawn



tivoli mist bora bora

Inspired by the flexible and open plan nature of interior spaces today, **tivoli mist** offers endless possibilities of an all-over carpet tile product.

All colour components that make up the **tivoli mist** range are available as solid **tivoli** colours as well as the **tivoli mist** transition tile design. With the added benefit of being available in both tile and plank size options, the range offers endless design possibilities for the creation of bespoke interior floor schemes.



tivoli mist turtle bay with
tivoli dominica dawn & guyana moss

tivoli mist

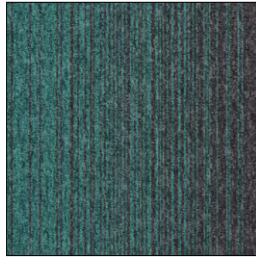
colour options



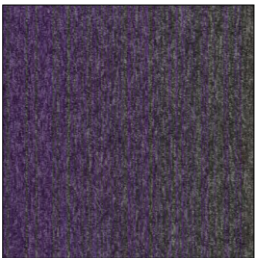
tivoli mist - icelandic isle
■ 32710 ■ 32910
LRV: Y 13.21 - L 45.01



tivoli mist - bora bora
■ 32706 ■ 32906
LRV: Y 14.24 - L 43.03



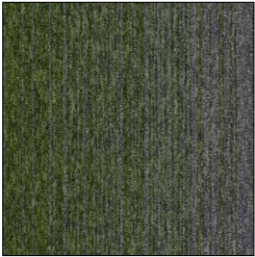
tivoli mist - ocean drive
■ 32703 ■ 32903
LRV: Y 13.11 - L 41.16



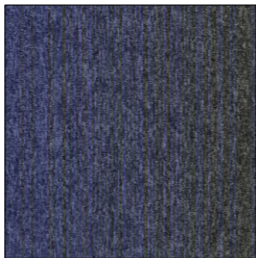
tivoli mist - havana town
■ 32704 ■ 32904
LRV: Y 8.80 - L 36.93



tivoli mist - polar drift
■ 32712 ■ 32912
LRV: Y 9.99 - L 37.50



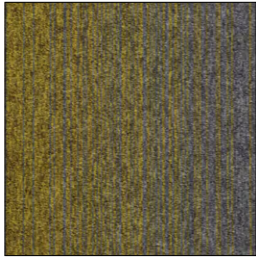
tivoli mist - turtle bay
■ 32705 ■ 32905
LRV: Y 10.17 - L 37.42



tivoli mist - nordic fjord
■ 32711 ■ 32911
LRV: Y 7.47 - L 33.95



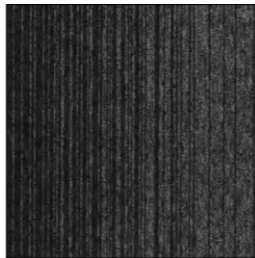
tivoli mist - baffin island
■ 32707 ■ 32907
LRV: Y 7.06 - L 31.17



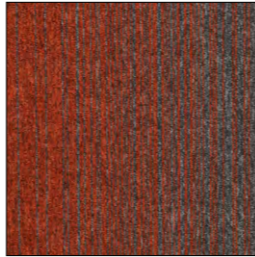
tivoli mist - south beach
■ 32701 ■ 32901
LRV: Y 14.27 - L 44.89



tivoli mist - bergen city
■ 32708 ■ 32908
LRV: Y 4.69 - L 24.36



tivoli mist - galapagos bay
■ 32713 ■ 32913
LRV: Y 5.75 - L 27.32



tivoli mist - palm springs
■ 32702 ■ 32902
LRV: Y 8.81 - L 35.77

technical specifications

Product Name	Tivoli Mist
Product Description	Low Level Loop
Pile Yarn Description	100% Solution Dyed Nylon (Polyamide-PA)
Tile Dimensions	50 cm x 50 cm, 25 cm x 100 cm (planks)
Pile Yarn Weight	600g/m ²
Total Weight	4050g/m ²
Pile Height	4.0mm
Total Thickness	6.5mm
Gauge/ends per 10cm	1/10 th gauge 50 stitches
Tufts per m2 / Pile Density	196,500/m ²
Backing Description	Accummen™, 75% recycled
Wear Classification	BS EN 1307 Heavy Commercial Use Class 33
Luxury Rating Class	LC2
Flammability	Euroclass Bfl-s1
Thermal Resistance	Tog Rating 0.39; ISO 8302: 0.04 m ² K/W
Castor Chair Rating	BS EN 985 Pass - suitable for continuous use
Hexapod	BS ISO 10361: Method B:2000 3 to 4
Static Loading	BS 4939: 1987 (2003) Recovery >80% (24hrs)
Dynamic Loading	BS ISO 2094: 1999 (2005) Loss <20% (1000 impacts)
Body Voltage Test	BS ISO 6356:2000 <2kV
Colour Fastness To Light	BS EN ISO 105 - B02 Minimum Grade 6
Colour Fastness To Shampoo	BS 1006:UK-TB: 1990 Minimum Grade 4-5
Sound Absorption Coefficient	BS EN 354:2003
Reduction in Impact Noise	BS EN ISO 10140-3:2010 23dB
Reduction in Impact Noise at 1000Hz	BS EN ISO 10140-3:2010 35.6dB
Number Of Tiles/Planks Per Box	20 (5m ²)



*All tiles within these designs are unique and any linear aspects may not match from one tile to the next



Monolithic

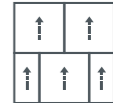


Random-drop

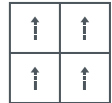


Half-drop

For best results we recommend*



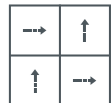
Brick



Monolithic

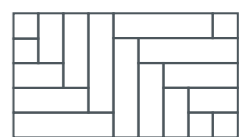


Half-drop



Quarter Turn

For best carpet plank installation results we recommend*



Herringbone

tivoli mist baffin island with
tivoli antigua steel & st lucia night

eco₂matters®

Each step we take towards achieving sustainability is evidenced and supported by strict eco-standards, with **Burmatex®** product EPD verified by an independent third-party verification of the declaration and data, according to ISO 14025:2006.

Burmatex®

MANUFACTURERS OF CREATIVE FLOORING 

Victoria Mills, The Green
Ossett, West Yorkshire
WF5 0AN
United Kingdom

tel: +44 (0) 1924 262 525
fax: +44 (0) 1924 280 033


for more information check:
www.burmatex.co.uk

email: **marketing@burmatex.co.uk**

international email:
international@burmatex.co.uk

 **[/company/burmatex-limited](https://www.linkedin.com/company/burmatex-limited)**

 **[@burmatex](https://www.instagram.com/burmatex)**

 **[/burmatex](https://www.pinterest.com/burmatex)**