

Burmatex®

MANUFACTURERS OF CREATIVE FLOORING 



origin® gull, goarse & shale

origin®

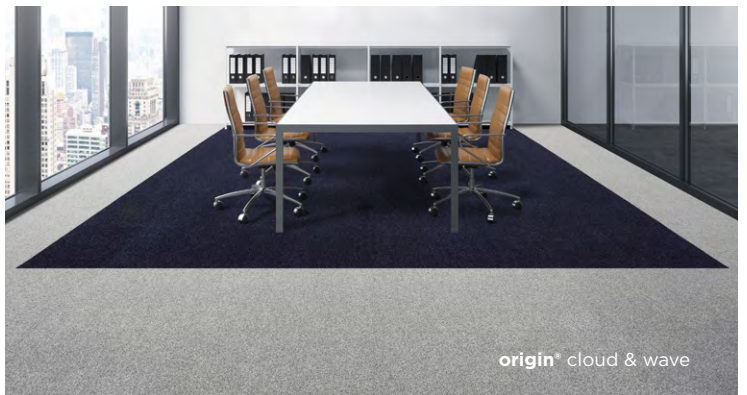
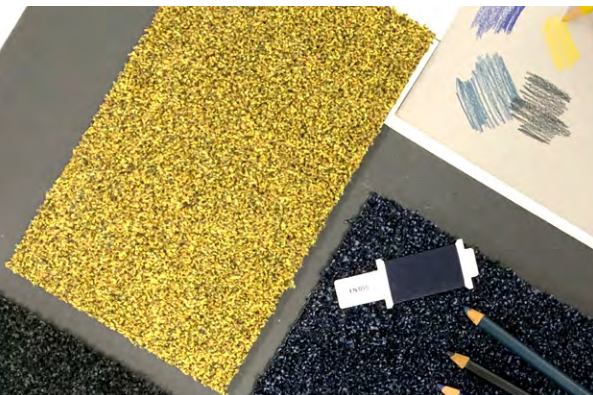
low carbon carpet tiles



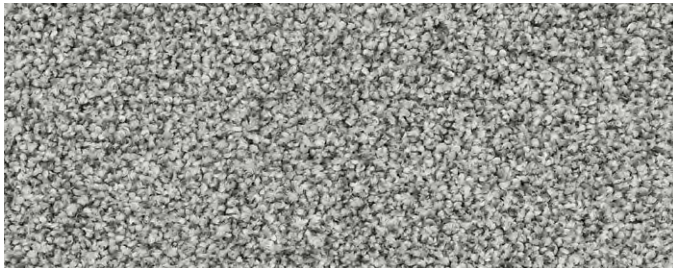
Made from 100% **Econyl**® **regenerated recyclable** solution dyed nylon yarn and our unique **BioBase**® **recycled** backing, **origin** is **low carbon**.

The commercial colour palette of 10 is sophisticated and refined, inspired by coastal walks and views. This cut pile range works both as a stand-alone product, and with others from our product portfolio, to enhance any commercial setting.





origin® colour palette



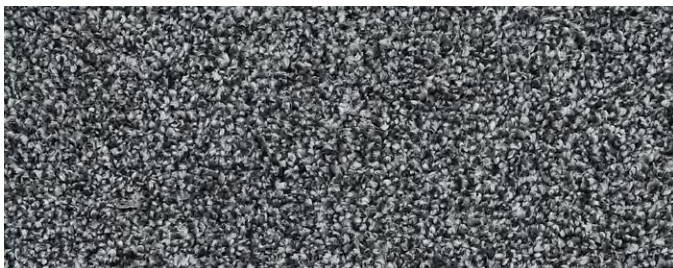
33201 cloud

LRV: Y 20.75



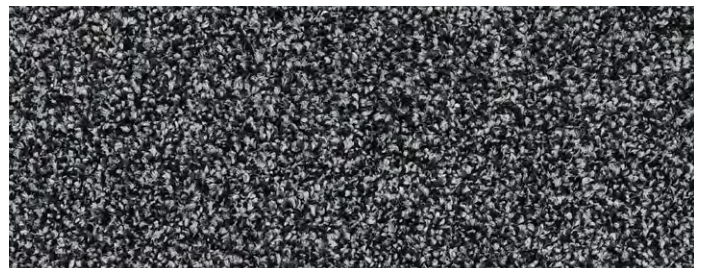
33202 pearl

LRV: Y 18.49



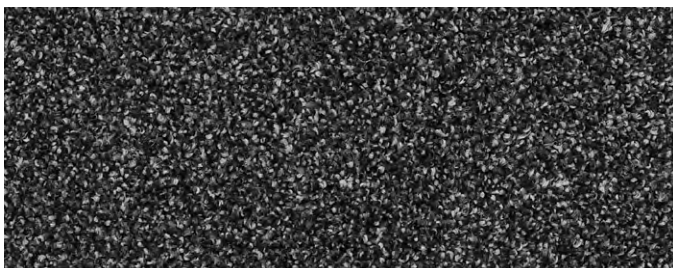
33203 pebble

LRV: Y 10.58



33204 shale

LRV: Y 7.67



33205 mussel

LRV: Y 5.24



33208 surf

LRV: Y 6.82



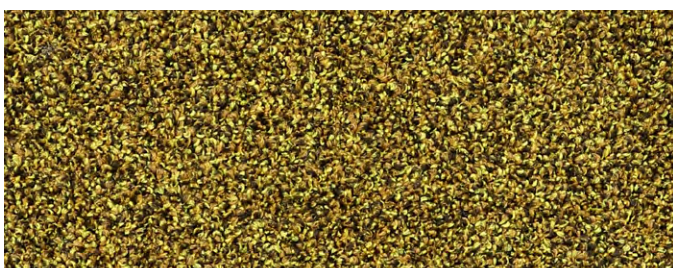
33206 gull

LRV: Y 2.57



33209 wave

LRV: Y 2.10



33207 gorse

LRV: Y 12.86

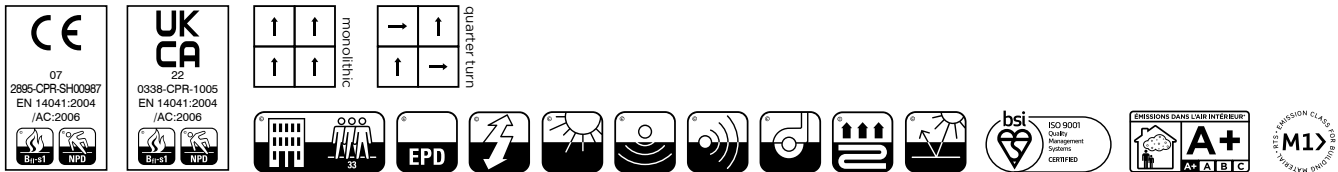


33210 heather

LRV: Y 4.16

technical specifications

Yarn	100% Econyl® regenerated recyclable solution dyed nylon
Dimensions	50cm x 50cm
Pile Weight	1300g/m ²
Total Weight	4550g/m ²
Total Thickness	9.5mm
Construction	Tufted 1/10th gauge cut pile twist
Pile Density	165,354/m ²
Backing	BioBase® recycled backing (recycled BS EN ISO 14021)
Wear Classification	Class 33 heavy commercial use (BS EN 1307)
Castor Chair Rating	Pass - continuous use (BS EN 985)
Luxury Rating Class	LC5
Flammability	Euroclass Bfl-s1
Static Loading	BS 4939: 1987 (2003) Recovery >80% (24hrs)
Reduction in Impact Noise	BS EN ISO 10140-3:2010 28dB
VOC	Class A+
Warranty	15 years
Number Of Tiles Per Box	14 (3.5m ²)



eco₂matters®

We are committed to helping deliver a sustainable future, because we believe that what we do **matters**. To help us deliver on this commitment, we have developed **eco₂matters®**, our sustainability principles, supported by independent 3rd party verification.



Journey to Net Zero & Beyond



Positive Environmental Impact



Social Values & Well Being

Made from 100% **Econyl® regenerated recyclable** solution dyed nylon yarn and our unique **BioBase® recycled** backing, **origin** is **low carbon**. The commercial colour palette of 10 is sophisticated and refined, inspired by coastal walks and views. This cut pile range works both as a stand-alone product, and with others from our product portfolio, to enhance any commercial setting.



origin is **low carbon**



Burmatex® reco₂very take back service provides a no landfill solution for your used tiles



origin is made from 100% **Econyl® regenerated recyclable** yarn



Burmatex® products are made using 100% certified **renewable** electricity



origin uses **BioBase® recycled** backing



eco₂matters® declarations are independently 3rd party verified

EPD
Burmatex® products are supported by 3rd party independently verified, product specific EPD's

LEED
Burmatex® products contribute towards Leed accreditation

SKA
Burmatex® products adhere to SKA standards

WELL Building Standards
Burmatex® products contribute to WELL Building Standards



need a BIM object?

all our products have BIM objects available on our website

For more information about
origin[®] **low carbon** carpet tiles
Visit www.burmatex.co.uk/origin

Need **advice**? Help with the **design**?
Call your Business Area Manager

Need an origin[®] **shadecard or samples?**



Scan the QR code
Call +44 (0) 1924 262525
Email samples@burmatex.co.uk

Burmatex[®]

MANUFACTURERS OF CREATIVE FLOORING 

KEEP IN TOUCH



Burmatex Ltd
Victoria Mills, The Green,
Ossett, West Yorkshire
WF5 0AN