

Burmatex®

MANUFACTURERS OF CREATIVE FLOORING 



arctic®

carbon neutral carpet tiles

arctic® tiles



arctic® is inspired by the changing landscape of the Arctic region. Organic lines cutting through icy rock, cold water flowing down frozen mountains and glacial river rapids inspire the movement in the design.

Made from Universal Fibers® Thrive® matter yarn, the **world's first carbon negative recycled** yarn, and our unique **eco:matters® BioBase™ recycled** backing, **arctic®** is **carbon neutral**.

arctic® planks



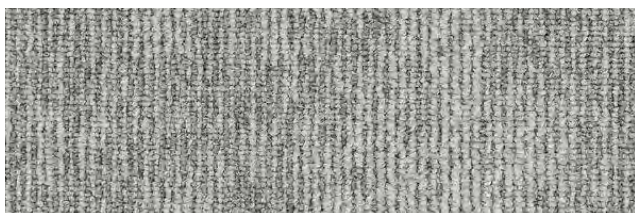
arctic® planks glacial grey & norse grey

The colour palette consists of 12 colours inspired by the natural elements of the Arctic - ice blues and cool greys amongst soft subtle warms, with marine-like green tones to further enhance the collection.

arctic® is available in both tile and plank, allowing you the freedom to express arctic® in either option, creating unique structures and patterns to suit your project.



arctic® colour palette



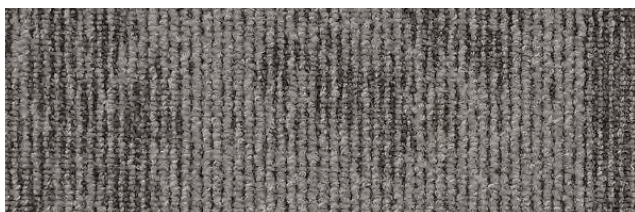
glacial grey - 34504 tile / 34604 plank

LRV: Y 28.64 - L 60.35



hail stone - 34511 tile / 34611 plank

LRV: Y 27.12 - L 58.79



norse grey - 34503 tile / 34603 plank

LRV: Y 13.19 - L 42.80



oslo fog - 34512 tile / 34612 plank

LRV: Y 28.80 - L 60.42



cool storm - 34502 tile / 34602 plank

LRV: Y 7.56 - L 32.88



seal grey - 34510 tile / 34610 plank

LRV: Y 14.74 - L 44.91



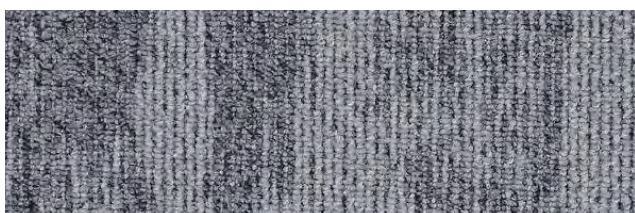
polar black - 34501 tile / 34601 plank

LRV: Y 3.64 - L 22.40



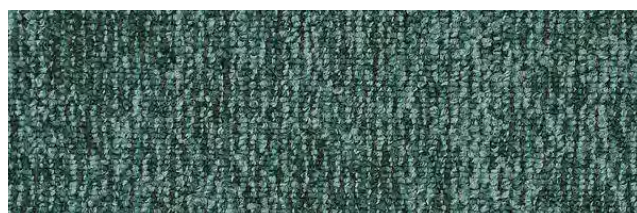
coastal mist - 34508 tile / 34608 plank

LRV: Y 16.29 - L 47.08



ice blue - 34506 tile / 34606 plank

LRV: Y 20.22 - L 51.83



marine ravine - 34509 tile / 34609 plank

LRV: Y 10.40 - L 38.24



blue water - 34505 tile / 34605 plank

LRV: Y 8.84 - L 35.30

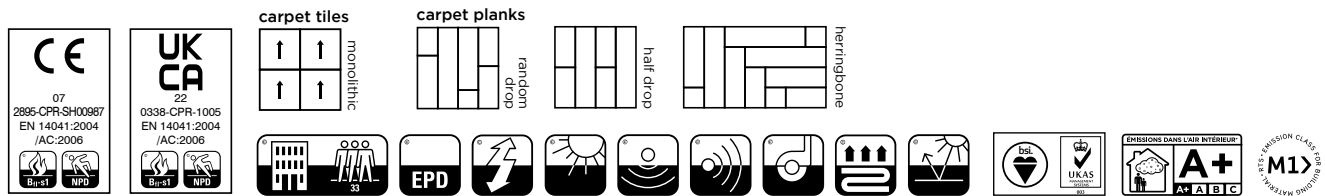


moonrise blue - 34507 tile / 34607 plank

LRV: Y 3.99 - L 23.46

technical specifications

Yarn	Universal Fibers® Thrive® matter carbon negative recycled yarn
Dimensions	50cm x 50cm / 25cm x 100cm
Pile Weight	624g/m ²
Total Weight	4024g/m ²
Total Thickness	7.0mm
Construction	Tufted 1/12th gauge loop
Pile Density	226,771/m ²
Backing	BioBase™ recycled backing (recycled BS EN ISO 14021)
Wear Classification	class 33 heavy commercial use (BS EN 1307)
Castor Chair Rating	pass - continuous use (BS EN 985)
Luxury Rating Class	LC1
Flammability	Euroclass Bfl-s1
Static loading	BS 4939: 1987 (2003) Recovery >80% (24hrs)
Reduction in Impact Noise	BS EN ISO 10140-3:2010 26dB
VOC	Class A+
Warranty	15 years



eco₂matters®

We are committed to helping deliver a sustainable future, because we believe that what we do **matters**. To help us deliver on this commitment, we have developed **eco₂matters®**, our sustainability principles, supported by independent 3rd party verification.



Made from Universal Fibers® Thrive® matter yarn, the **world's first carbon negative recycled** yarn, and our unique **eco₂matters® BioBase™ recycled** backing, **arctic®** is **carbon neutral**. The design and 12 colour palette are inspired by the dramatic icy landscape of the arctic region we hope to help preserve.

	arctic® is carbon neutral		Burmatex® reco₂very take back service provides a no landfill solution for your used tiles
	arctic® uses carbon negative recycled yarn		Burmatex® products are made using 100% certified renewable electricity
	arctic® uses BioBase™ recycled backing		eco₂matters® eclarations are independently 3rd party verified

EPD Burmatex® products are supported by 3rd party independently verified, product specific EPD's	LEED Burmatex® products contribute towards Leed accreditation	SKA Burmatex® products adhere to SKA standards	WELL Building Standards Burmatex® products contribute to WELL Building Standards
------------------------------------------------------------------------------------------------------------	-------------------------------------------------------------------------	----------------------------------------------------------	--------------------------------------------------------------------------------------------



need a BIM object?
 all our products have BIM objects available on our website

For more information about
arctic carbon neutral carpet tiles
Visit www.burmatex.co.uk/arctic

Need **advice**? Help with the **design**?
Call your Business Area Manager

Need an arctic shadecard or samples?



Scan the QR code
Call +44 (0) 1924 262525
Email samples@burmatex.co.uk

Burmatex®

MANUFACTURERS OF CREATIVE FLOORING 

KEEP IN TOUCH



Burmatex Ltd
Victoria Mills, The Green,
Ossett, West Yorkshire
WF5 0AN