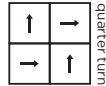
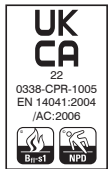
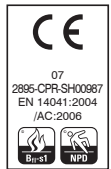


## technical specifications

	tiles	sheet
Fibre Composition	80% Polypropylene 15% Nylon 5% Recycled Polyester	80% Polypropylene 15% Nylon 5% Recycled Polyester
Dimensions	50cm x 50cm	30cm x 2cm
Pile Weight	940g/m <sup>2</sup>	
Total Weight	4050g/m <sup>2</sup>	940g/m <sup>2</sup>
Total Thickness	7.5mm	5.5mm
Backing	<b>BioBase<sup>®</sup> recycled</b> backing (recycled BS EN ISO 14021)	
Wear Classification	Heavy Contract	Heavy Contract
Flammability	Euroclass Bfl-s1	Euroclass Bfl-s1
Thermal Resistance	Tog Rating 0.84	Tog Rating 0.84
Castor Chair Rating	Pass - continuous use (BS EN 985)	Pass - continuous use (BS EN 985)
Static Loading	BS 4939:1987 (2003) Recovery >80% (24hrs)	BS 4939:1987 (2003) Recovery >80% (24hrs)
Dynamic Loading	BS ISO 2094:1999 (2005) Loss <20% (1000 impacts)	BS ISO 2094:1999 (2005) Loss <20% (1000 impacts)
Body Voltage Test	BS ISO 6356:2000 <2kV	BS ISO 6356:2000 <2kV
Colour Fastness To Light	BS EN ISO 105 - B02 Minimum grade 6	BS EN ISO 105 - B02 Minimum grade 6
Colour Fastness To Shampoo	BS 1006:UK-TB: 1990 Minimum Grade 4	BS 1006:UK-TB: 1990 Minimum Grade 4
Sound Absorption Coefficient	BS EN 354:2003	BS EN 354:2003
Reduction in Impact Noise	BS EN ISO 10140-3:2010 21dB	BS EN ISO 10140-3:2010 19dB
Reduction in Impact Noise at 1000Hz	BS EN ISO 140-8: Part 8: 1998 30.7dB	BS EN ISO 140-8: Part 8: 1998 30.7dB
VOC	A+	A+
Warranty	15 years	15 years
Number of Tiles per Box	20 (5m <sup>2</sup> )	



FM 01440 EMS 784147

## eco<sub>2</sub>matters<sup>®</sup>

We are committed to helping deliver a sustainable future, because we believe that what we do **matters**. To help us deliver on this commitment, we have developed **eco<sub>2</sub>matters<sup>®</sup>** sustainability goals, supported by the independently 3rd party verified **eco<sub>2</sub>matters<sup>®</sup>** ecosystem.



**Journey to Net Zero & Beyond**



**Positive Environmental Impact**



**Social Values & Well Being**

Made from solution dyed fibres including 5% recycled polyester and our unique **BioBase<sup>®</sup>** recycled backing, **academy<sup>®</sup>** is **low carbon**. The extremely durable broad ribbed carpet, available in tile or sheet making it easy to maintain, and features **anti-fray** and **anti-ravel** technology. The palette of 24 colours is an ideal choice for use in schools, colleges and universities, perfect for heavy footfall environments.



**low carbon**

**academy<sup>®</sup>** is **low carbon**



**anti-fray**  
**anti-ravel**

**academy<sup>®</sup>** features **anti-fray/anti-ravel** technology



**BioBase<sup>®</sup>**  
**backing**

**academy<sup>®</sup>** tiles use **BioBase<sup>®</sup>** **recycled** backing



**take back service**

**Burmatex<sup>®</sup> reco<sub>2</sub>very** take back service provides a no landfill solution for your used tiles



**100% certified renewable**

**Burmatex<sup>®</sup>** products are made using 100% certified **renewable** electricity



**independently 3rd party verified**

**eco<sub>2</sub>matters<sup>®</sup>** declarations are independently 3rd party verified

### EPD

**Burmatex<sup>®</sup>** products are supported by 3rd party independently verified, product specific EPD's

### LEED

**Burmatex<sup>®</sup>** products contribute towards Leed accreditation

### SKA

**Burmatex<sup>®</sup>** products adhere to SKA standards

### WELL Building Standards

**Burmatex<sup>®</sup>** products contribute to WELL Building Standards

Contact Us  
T +44 (0) 1924 262 525  
email: sales@burmatex.co.uk

Burmatex Ltd  
Victoria Mills, The Green  
Ossett, West Yorkshire  
WF5 0AN, United Kingdom

## LRV values

Product code tiles	Product code sheet	Product colour name	CIE Y
11805	11505	diamond grey	10.38
11803	11503	grey cloud	5.25
11802	11502	charcoal grey	3.45
11801	11501	ebony slate	2.03
11804	11504	storm grey	8.99
11817	11517	denim blue	7.14
11807	11507	ink blue	2.71
11864	11564	midnight sky	2.27
11819	11519	horizon blue	7.61
11814	11514	atlantis blue	3.99
11862	11562	sapphire blue	3.44
11822	11522	turquoise blue	4.92
11834	11534	honey beige	11.83
11878	11578	sandy beige	7.48
11865	11565	earth brown	4.51
11871	11571	sage green	8.16
11867	11567	saffron yellow	21.24
11868	11568	tangerine orange	14.14
11830	11530	lime green	9.42
11883	11583	emerald green	4.87
11874	11574	lilac iris	6.16
11884	11584	dark violet	2.78
11877	11577	purple orchid	3.72
11870	11570	cherry red	2.93