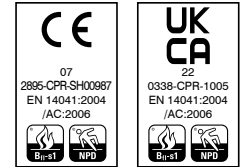
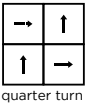
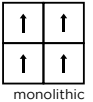


technical specifications

| | |
|-------------------------------------|---|
| Yarn | 100% Econyl[®] regenerated recyclable solution dyed nylon |
| Dimensions | 50cm x 50cm |
| Pile Weight | 1300g/m ² |
| Total Weight | 4550g/m ² |
| Pile Height | 7.0mm |
| Total Thickness | 9.5mm |
| Construction | Tufted 1/10th gauge cut pile twist |
| Pile Density | 165,354/m ² |
| Backing | BioBase[®] recycled backing (recycled BS EN ISO 14021) |
| Wear Classification | Class 33 heavy commercial use (BS EN 1307) |
| Luxury Rating Class | LC5 |
| Flammability | Euroclass Bfl-s1 |
| Thermal Resistance | Tog Rating 0.93 |
| Castor Chair Rating | BS EN 985 Pass - suitable for continuous use |
| Hexapod | BS ISO 10361: Method B:2000 3 to 4 |
| Static Loading | BS 4939: 1987 (2003) Recovery >80% (24hrs) |
| Dynamic Loading | BS ISO 2094: 1999 (2005) Loss <20% (1000 impacts) |
| Body Voltage Test | BS ISO 6356:2000 <2kV |
| Colour Fastness To Light | BS EN ISO 105 - B02 Minimum Grade 6 |
| Colour Fastness To Shampoo | BS 1006:UK-TB: 1990 Minimum Grade 4-5 |
| Sound Absorption Coefficient | BS EN 354:2003 |
| Reduction in Impact Noise | BS EN ISO 10140-3:2010 28dB |
| Reduction in Impact Noise at 1000Hz | BS EN ISO 10140-3:2010 47.0dB |
| VOC | A+ |
| Warranty | 15 years |
| Number Of Tiles Per Box | 14 (3.5m ²) |



eco₂matters[®]

We are committed to helping deliver a sustainable future, because we believe that what we do **matters**. To help us deliver on this commitment, we have developed **eco₂matters[®]**, our sustainability principles, supported by independent 3rd party verification.



Made from 100% **Econyl[®] regenerated recyclable** solution dyed nylon yarn and our unique **BioBase[®] recycled** backing, **origin[®]** is **low carbon**. The commercial colour palette of 10 is sophisticated and refined, inspired by coastal walks and views. This cut pile range works both as a stand-alone product, and with others from our product portfolio, to enhance any commercial setting.

| | |
|--|---|
| <p>origin[®] is low carbon</p> | <p>Burmatex[®] reco₂very take back service provides a no landfill solution for your used tiles</p> |
| <p>origin[®] is made from 100% Econyl[®] regenerated recyclable yarn</p> | <p>Burmatex[®] products are made using 100% certified renewable electricity</p> |
| <p>origin[®] uses BioBase[®] recycled backing</p> | <p>eco₂matters[®] declarations are independently 3rd party verified</p> |
| <p>EPD Burmatex[®] products are supported by 3rd party independently verified, product specific EPD's</p> | <p>LEED Burmatex[®] products contribute towards Leed accreditation</p> |
| <p>SKA Burmatex[®] products adhere to SKA standards</p> | <p>WELL Building Standards Burmatex[®] products contribute to WELL Building Standards</p> |



BIM need a BIM object?
all our products have BIM objects available on our website

need samples? scan the QR code visit www.burmatex.co.uk call +44 (0) 1924 262525 email samples@burmatex.co.uk



contact us
T +44 (0) 1924 262 525
email: sales@burmatex.co.uk

Burmatex Ltd
Victoria Mills, The Green
Ossett, West Yorkshire
WF5 0AN, United Kingdom

www.burmatex.co.uk

LRV values

| Product code | Product colour name | CIE Y |
|--------------|---------------------|-------|
| 33201 | cloud | 20.75 |
| 33202 | pearl | 18.49 |
| 33203 | pebble | 10.58 |
| 33204 | shale | 7.67 |
| 33205 | mussel | 5.24 |
| 33206 | gull | 2.57 |
| 33207 | gorse | 12.86 |
| 33208 | surf | 6.82 |
| 33209 | wave | 2.10 |
| 33210 | heather | 4.16 |