

arctic[®]

arctic[®] malmo coast & oslo fog



carbon neutral carpet tiles

Burmatex[®]

MANUFACTURERS OF CREATIVE FLOORING 

2 arctic®

arctic®

Multilevel loop carpet tiles & planks made in the UK

arctic® is inspired by the changing landscape of the Arctic region. Organic lines cutting through icy rock, cold water flowing down frozen mountains and glacial river rapids inspire the movement in the design.

The colour palette consists of 12 colours inspired by the natural elements of the Arctic - ice blues and cool greys amongst soft subtle warms, with sunrise inspired tones to further enhance the collection.

Made using Universal Fibers® ground-breaking Thrive® matter yarn, the world's first carbon negative recycled yarn, over 50% of components have received a C2C Certified Material Health Certificate™ at the Gold level (v4.0) and our unique BioBase® recycled backing, arctic® is **carbon neutral**.

eco₂matters®

We are committed to achieving Net Zero through the continual removal of carbon from our products and processes. We believe that what we do matters, that the ecology of our planet matters, and that **eco₂matters®**

To find out more visit www.burmatex.co.uk/eco2matters/



arctic® hail stone, norse grey





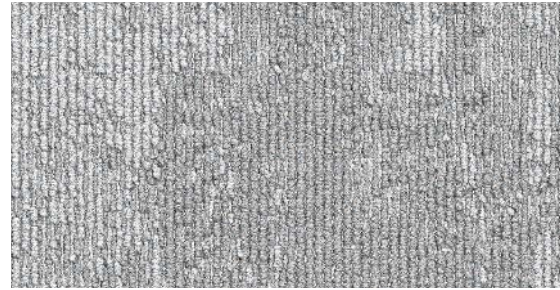
arctic® malmo coast, drift wood & first light

arctic® glacial grey

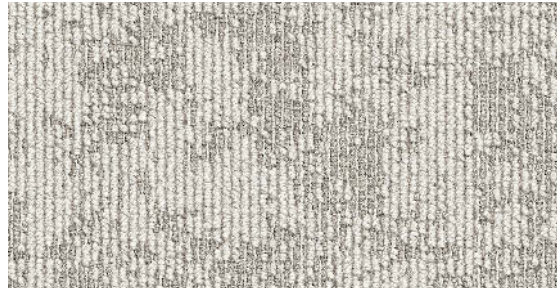
8 colour palette

colour palette

arctic® has 12 colour options



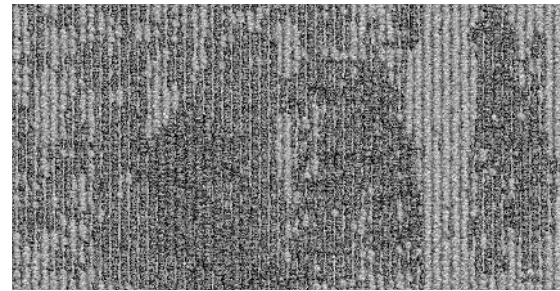
glacial grey LRV: Y 28.64
34504 tile / 34604 plank



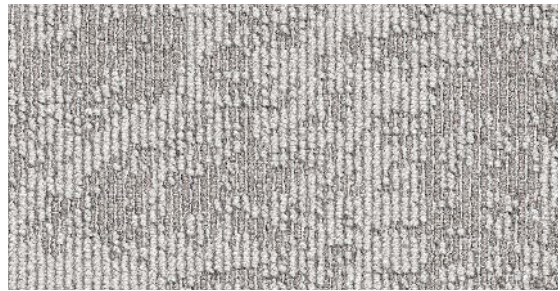
oslo fog LRV: Y 28.80
34512 tile / 34612 plank



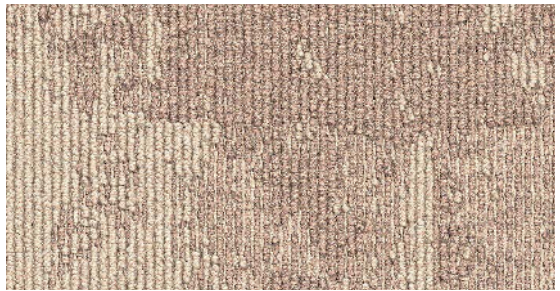
snow fox LRV: Y 28.92
34516 tile / 34616 plank



norse grey LRV: Y 13.19
34503 tile / 34603 plank



hail stone LRV: Y 27.12
34511 tile / 34611 plank



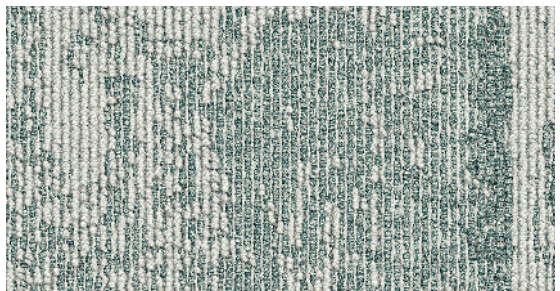
first light LRV: Y 33.40
34514 tile / 34614 plank



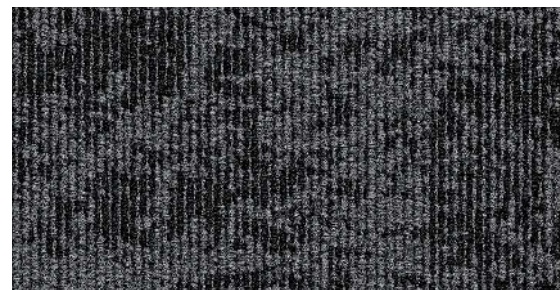
cool storm LRV: Y 7.56
34502 tile / 34602 plank



seal grey LRV: Y 14.74
34510 tile / 34610 plank



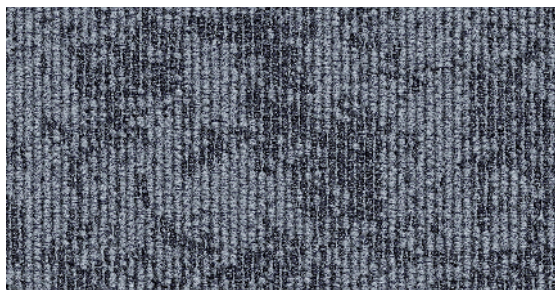
malmo coast LRV: Y 27.36
34515 tile / 34615 plank



dark horizon LRV: Y 4.44
34513 tile / 34613 plank



drift wood LRV: Y 8.22
34517 tile / 34617 plank



blue water LRV: Y 8.84
34505 tile / 34605 plank



arctic® glacial grey & blue water



eco₂matters®

Carbon Status:

 carbon neutral
* Offset at source and independently 3rd party verified. Details available upon request.

Yarn Description:

 carbon negative
recycled yarn

Backing:

 BioBase®
* Recycled content BS EN ISO 14021

Global Warming Potential / kg CO₂ eq:

 independently
3rd party verified **3.22**

arctic®

Total Recycled Content of Product:

72.0%
BS EN ISO 14021

Installation Waste:

3-4%
* Based on average installation

Wear Classification:

Class 33
heavy commercial use (BS EN 1307)

Sound Absorption Coefficient:

Class E .02
BS EN 354:2003

Warranty:

15 years

Yarn Certification:

 C2C Certified Material
Health Certificate™ Gold

Castor Chair Rating:

Pass - continuous use
(BS EN 985)

Impact Sound Insulation:

26dB
BS EN ISO 10140-3:2010

Environmental Product Declarations

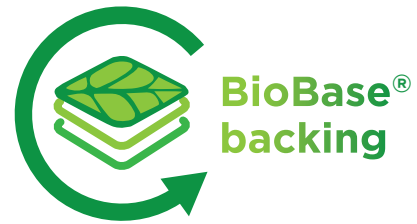


Independent product specific
EPD of full life cycle A1 - D



EPDs and independent third party verification are an integral part of our sustainability principles.

Low Carbon BioBase® backing



Recycled Content

77%

*minimum content

BioBase® is our low carbon backing system, made using locally sourced recycled organic materials. Combined with 100% organic, non-vinyl polymer binders and fillers.

Take Back Service



Total Landfill Waste

0%

Working with our partners, we work to find your used carpet tiles a new home, such as helping local community organisations requiring low cost flooring.



arctic®

arctic® is available in both tile and plank, allowing you the freedom to express arctic® in either option, creating unique structures and patterns to suit your project.



Adhesive Free Installation to Facilitate Flooring Reuse

Burmatex® achieves circular installation with IOBAC



arctic® on standard floor
with IOBAC Tab-It®



arctic® on raised access floor
with IOBAC MagTabs®

EN

Adhesive free installation with IOBAC allows carpet tiles to be held securely in place, yet are uplifted cleanly and damage-free, enabling easier reuse and recycling.

PL

Dzięki bezklejowemu montażowi za pomocą systemu magnetycznego IOBAC nasze płytki dywanowe trzymają się pewnie na miejscu, a jednocześnie można je łatwo i bez uszkodzeń podnieść, co ułatwia ich ponowne użycie i recykling.

FR

Grâce au système de fixation IOBAC pour une pose sans colle, les dalles de moquette sont maintenues solidement en place, mais peuvent être soulevées proprement et sans être endommagées, permettant une réutilisation et un recyclage plus faciles.

AR

يسمح التركيب الخالي من المواد اللاصقة باستخدام IOBAC بتثبيت بلاط السجاد بشكل آمن في مكانه، مع رفعه بشكل نظيف وخالي من التلف، مما يتيح إعادة استخدامه وإعادة تدويره بسهولة.

Design for Deconstruction

To enable future reuse, repurposing, or recycling

EN

The Construction industry is currently in transition from a linear path to a circular economy, but this process is still at an early stage. Design Deconstruction plays a vital role in a buildings' circularity and a considered approach in selective dismantlement of building components for prevision of its future reuse, repurposing or indeed recycling, is imperative in this change.

PL

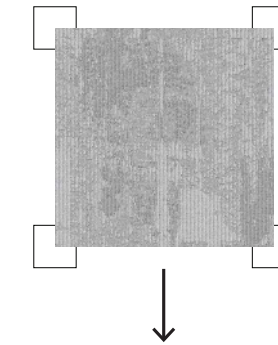
Branża budowlana przechodzi obecnie transformację z gospodarki liniowej do gospodarki o obiegu zamkniętym, ale proces ten jest wciąż na wczesnym etapie. Dekonstrukcja projektowa odgrywa istotną rolę w obiegu zamkniętym budynków, a przemyślane podejście do selektywnego demontażu komponentów budynku w celu przygotowania ich przyszłego ponownego wykorzystania, zmiany przeznaczenia lub recyklingu jest niezbędne w tej zmianie.

FR

Le secteur de la construction est actuellement en train de passer d'un fonctionnement linéaire vers une économie circulaire, mais ce processus n'en est qu'à ses débuts. La conception en vue de la déconstruction joue un rôle essentiel dans le caractère circulaire des bâtiments et une approche réfléchie du démantèlement sélectif des composants du bâtiment pour prévoir leur réutilisation, leur réaffectation ou même leur recyclage futurs, est impérative dans ce changement.

AR

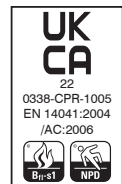
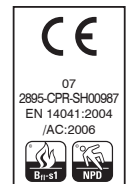
تمر صناعة البناء والتشييد حاليًا بمرحلة انتقالية من المسار الخطي إلى الاقتصاد الدائري، ولكن هذه العملية لا تزال في مرحلة مبكرة. يلعب تفكيك التصميم دورًا حيويًا في دائرية المباني، ويعد النهج المدروس في التفكيك الانتقائي لمكونات المبنى من أجل التنبؤ بإعادة استخدامها أو إعادة توجيهها أو إعادة تدويرها في المستقبل أمرًا ضروريًا في هذا التغيير.



IOBAC enables carpet tiles to be uplifted cleanly and damage-free, enabling easier reuse and recycling.

technical specification

Yarn	Universal Fibers® Thrive® matter carbon negative recycled yarn
Tile / plank dimensions	50cm x 50cm / 25cm x 100cm
Pile Weight	624g/m ²
Total Weight	4024g/m ²
Total Thicknes	7.0mm
Backing	BioBase® recycled backing (recycled BS EN ISO 14021)
Wear Classification	Class 33 heavy commercial use (BS EN 1307)
Castor Chair Rating	Pass - continuous use (BS EN 985)
Flammability	Euroclass Bfl-s1
Static Loading	BS 4939: 1987 (2003) Recovery >80% (24hrs)
Reduction in Impact Noise	BS EN ISO 10140-3:2010 26dB
Warranty	15 years
Tiles / Planks per Box	20 (5m ²) / 18 (4.5m ²)



FM 01440 EMS 784147

Installation Method:

carpet tiles



monolithic

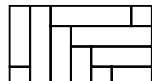
carpet planks



random drop



half drop



herringbone

Burmatex®

MANUFACTURERS OF CREATIVE FLOORING

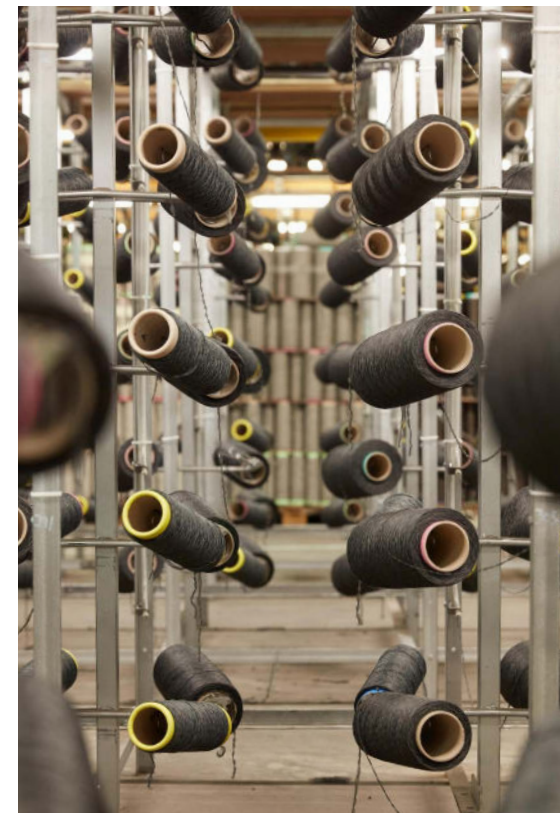
Burmatex®, created in 1967, is one of the UK's leading designers and manufacturers of contract carpet tiles. Our eco friendly portfolio focuses on the design and creation of innovative products to meet the needs of architects, specifiers and contractors. Get in touch to discuss our design service for your project.

eco₂matters®

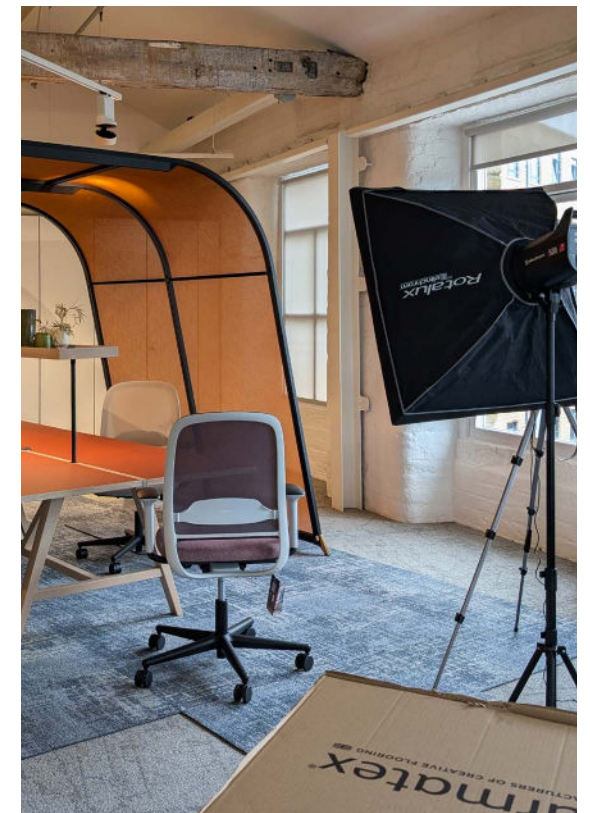
Research & Development



Product & Technical Testing



Photography & Product Launch



PL

Stworzona w 1967 roku marka **Burmatex®** jest jednym z czołowych brytyjskich projektantów i producentów płytek dywanowych. Nasza oferta obejmuje produkty przyjazne dla środowiska, które są projektowane i tworzone z myślą o potrzebach architektów, projektantów i wykonawców. Skontaktuj się z nami, aby dowiedzieć się więcej o naszych usługach dla Twojego projektu.

FR

Burmatex®, la marque créée en 1967, est l'un des principaux concepteurs et fabricants de dalles de moquette au Royaume-Uni. Son portefeuille écologique se concentre sur la conception et la création de produits innovants pour répondre aux besoins des architectes, des spécificateurs et des entrepreneurs. Contactez-nous pour obtenir davantage d'informations sur notre service de conception pour votre projet.

AR

العلامة التجارية **Burmatex®**، التي تأسست في عام 1967، هي إحدى العلامات التجارية البارزة في تصميم وتصنيع بلاط السجاد التعاقد في المملكة المتحدة. تركز مجموعتنا الصديقة للبيئة على تصميم وإنشاء منتجات مبتكرة لتلبية احتياجات المهندسين المعماريين ومحددي المواصفات والمقاولين. تواصل معنا لمناقشة خدمات التصميم الخاصة بنا لمشروعك.

Burmatex[®]

MANUFACTURERS OF CREATIVE FLOORING 

eco₂matters[®]

Head Office

Victoria Mills, The Green
Ossett
West Yorkshire
WF5 0AN
United Kingdom

Tel: +44 (0) 1924 262525
Email: projects@burmatex.co.uk

www.burmatex.co.uk

Issue: April 2026