

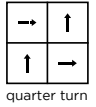
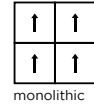
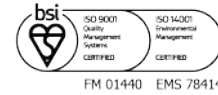
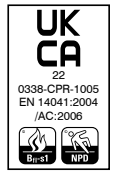
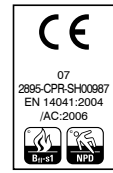
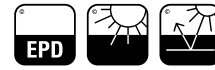
entrance collection

Burmatex

MANUFACTURERS OF CREATIVE FLOORING 

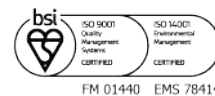
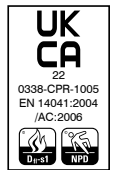
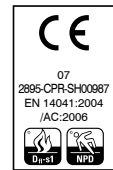
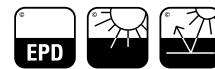
grimebuster 50 & chevrolay 50 - carpet tiles

Fibre	100% Polypropylene
Dimensions	50cm x 50cm
Pile Weight	1490g/m ²
Total Weight	4300g/m ²
Total Thickness	12mm
Backing Description	BioBase® recycled backing (recycled BS EN ISO 14021)
Wear Classification	Heavy Contract
Flammability	Euroclass Bfl-s1
Colour Fastness To Light	BS EN ISO 105 - B02 Minimum grade 6
Colour Fastness To Shampoo	BS 1006:UK-TB: 1990 Minimum Grade 4
Warranty	15 years
Number of Tiles per Box	12 (3m ²)



7700 grimebuster & 7800 chevrolay - carpet sheets

Fibre	100% Polypropylene
Dimensions	2m x 30m
Total Weight	1490g/m ²
Total Thickness	10.0mm
Wear Classification	Heavy Contract
Flammability	Euroclass Dfl-s1
Colour Fastness To Light	BS EN ISO 105 - B02 Minimum grade 6
Colour Fastness To Shampoo	BS 1006:UK-TB: 1990 Minimum Grade 4
Warranty	15 years



eco₂matters®

We are committed to helping deliver a sustainable future, because we believe that what we do **matters**. To help us deliver on this commitment, we have developed **eco₂matters®**, our sustainability principles, supported by independent 3rd party verification.



Journey to Net Zero & Beyond



Positive Environmental Impact



Social Values & Well Being

Made from 100% polypropylene recyclable fibre and our unique **BioBase® recycled** backing. The **entrance collection** is able to withstand heavy foot traffic as well as creating an effective barrier against dirt and wear.



protects

entrance collection protects interior flooring finishes



withstands heavy traffic

entrance collection withstands heavy foot traffic



BioBase® backing

entrance collection uses **BioBase® recycled** backing



recovery take back service

Burmatex® recovery take back service provides a no landfill solution for your used tiles



100% certified renewable

Burmatex® products are made using 100% certified **renewable** electricity



independently 3rd party verified

eco₂matters® declarations are independently 3rd party verified

EPD

Burmatex® products are supported by 3rd party independently verified, product specific EPD's

LEED

Burmatex® products contribute towards Leed accreditation

SKA

Burmatex® products adhere to SKA standards

WELL Building Standards

Burmatex® products contribute to WELL Building Standards



need a BIM object?

all our products have BIM objects available on our website

need samples?

scan the QR code, call +44 (0) 1924 262525, visit our website or email us at samples@burmatex.co.uk



contact us
T +44 (0) 1924 262 525
email: sales@burmatex.co.uk

Burmatex Ltd
Victoria Mills, The Green
Ossett, West Yorkshire
WF5 0AN, United Kingdom

www.burmatex.co.uk

Burmatex reserves the right to improve the specification of all products without prior notification. E&OE Burmatex carpets, carpet tiles and carpet planks should be installed and used in full accordance with instructions at www.burmatex.co.uk and recognised trade standards. Orders are subject to Burmatex terms and conditions of sale. See: www.burmatex.co.uk

LRV values for chevrolay 50

Product code	Product colour name	CIE Y
6228	beta blue	3.52
6236	gamma green	2.87
6239	theta brown	2.04
6240	alpha grey	2.98
6246	kappa fawn	4.74

LRV values for grimebuster 50

Product code	Product colour name	CIE Y
1628	haydock blue	2.85
1636	curragh green	2.36
1639	goodwood brown	2.62
1640	newmarket grey	3.52
1646	wincanton fawn	4.34
1647	ascot black	2.23

LRV values for 7800 chevrolay

Product code	Product colour name	CIE Y
7828	blue	3.52
7836	green	2.87
7839	brown	2.04
7840	charcoal	2.98
7846	fawn	4.74

LRV values for 7700 grimebuster

Product code	Product colour name	CIE Y
1428	blue	3.38
1436	green	2.60
1439	brown	1.88
1440	grey	4.10
1446	fawn	4.28