

Burmatex[®]
MANUFACTURERS OF CREATIVE FLOORING 

alaska[®]



low carbon carpet tiles

alaska[®] husky & amber

2 alaska®

alaska®

Multilevel loop carpet tiles made in the UK

alaska® is a timeless and tactile design, inspired by the natural textures found in the Alaskan landscape. The expansive biophilic palette and luxurious rippled effect is an ideal choice for commercial interiors.

alaska® tiles are available in 16 colours.

alaska® is made from 100% **Econyl® regenerated recyclable** solution dyed nylon yarn and our unique **BioBase® recycled** backing – making **alaska® low carbon**.

eco₂matters®

We are committed to achieving Net Zero through the continual removal of carbon from our products and processes. We believe that what we do matters, that the ecology of our planet matters, and that **eco₂matters®**

To find out more visit www.burmatex.co.uk/eco2matters/



alaska® rapids, alpine, lagoon, wildflower & amber



alaska® antler & alpine



alaska® ridge

colour palette

alaska® has 16 colour options



ice 22201
LRV: Y 14.80

antler 22213
LRV: Y 23.07

maple 22215
LRV: Y 24.28

rapids 22219
LRV: Y 15.77

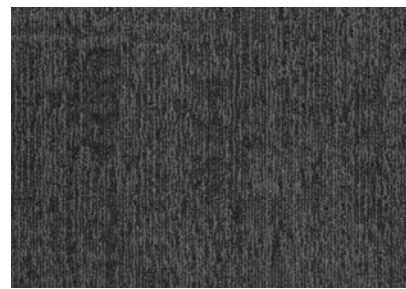


ridge 22202
LRV: Y 10.09

husky 22209
LRV: Y 14.79

amber 22216
LRV: Y 7.71

lagoon 22220
LRV: Y 8.30



north 22204
LRV: Y 6.57

wolf 22210
LRV: Y 7.41

wildflower 22217
LRV: Y 9.05

lake 22208
LRV: Y 7.10

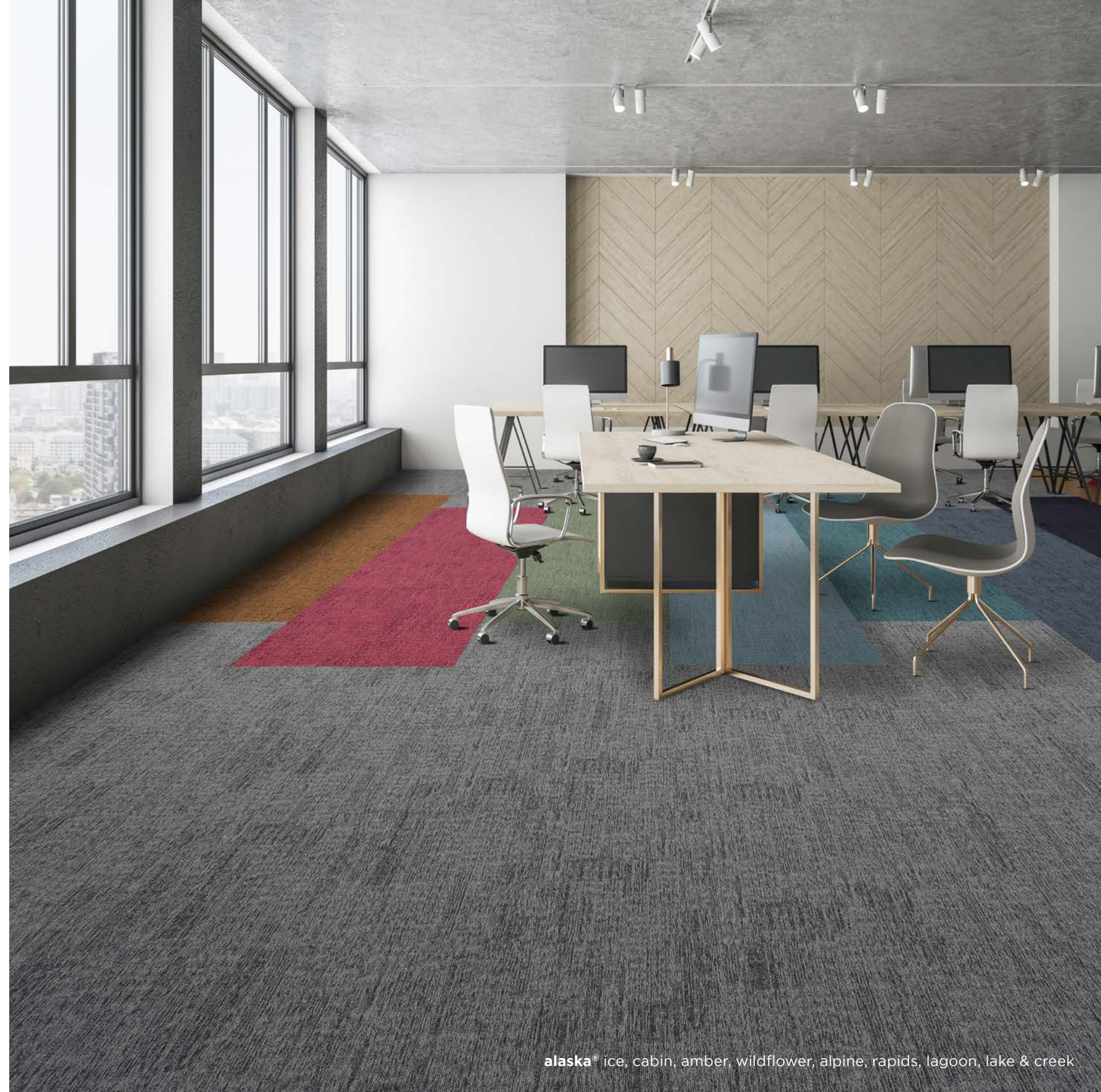


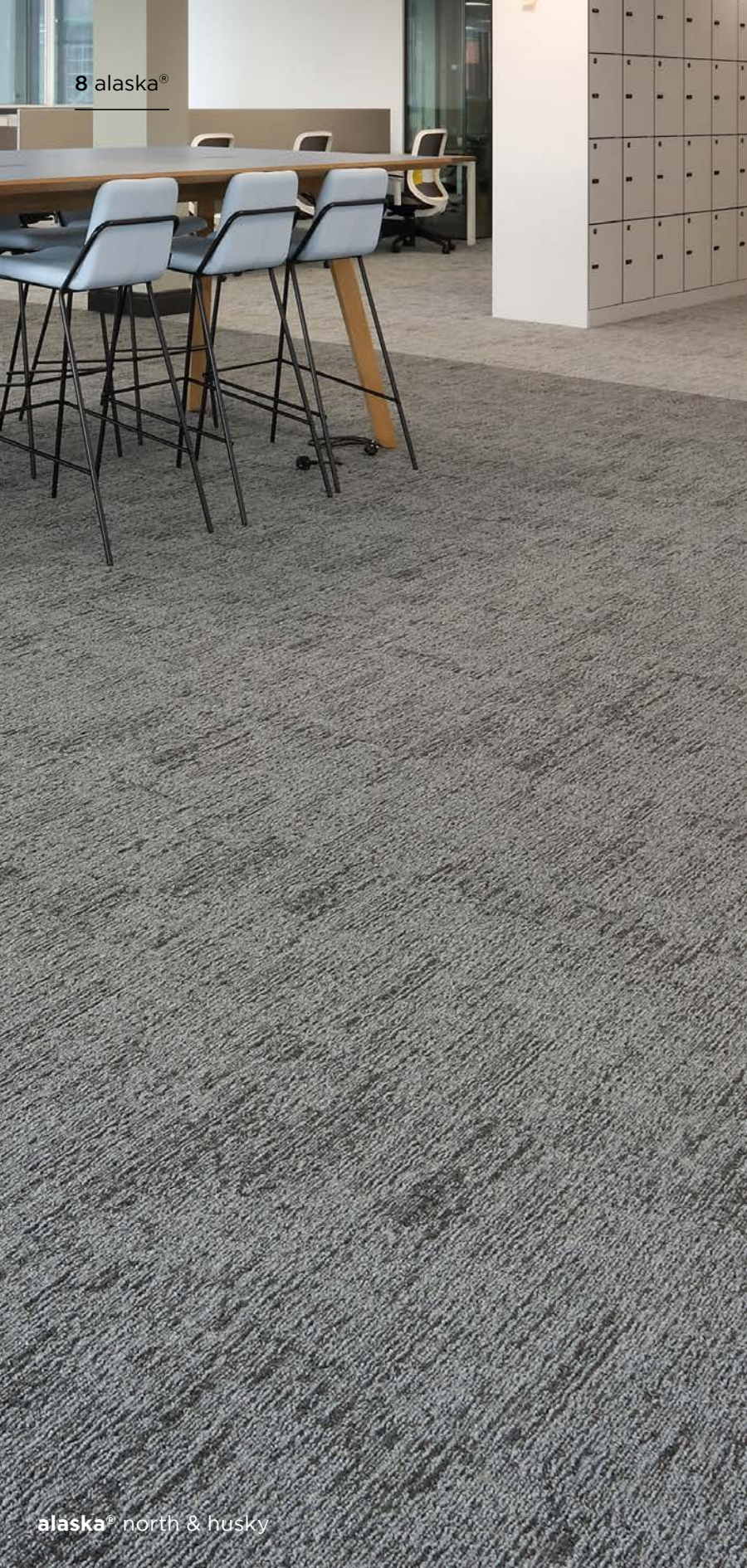
moose 22205
LRV: Y 3.24

cabin 22214
LRV: Y 6.05

alpine 22218
LRV: Y 15.16

creek 22207
LRV: Y 2.73





eco₂matters®

Carbon Status:

 low carbon

Yarn Description:

 100% Econyl®
regenerated recyclable yarn

Backing:

 BioBase®
* Recycled content BS EN ISO 14021

Global Warming Potential / kg CO₂ eq:

 independently
3rd party verified 3.42

alaska®

Total Recycled Content of Product:

74.7%
BS EN ISO 14021

Installation Waste:

3-4%
* Based on average installation

Wear Classification:

Class 33
heavy commercial use (BS EN 1307)

Sound Absorption Coefficient:

Class E .02
BS EN 354:2003

Warranty:

15 years

Colour Palette:

16 options

Castor Chair Rating:

Pass - continuous use
(BS EN 985)

Impact Sound Insulation:

22dB
BS EN ISO 10140-3:2010

Environmental Product Declarations



Independent product specific
EPD of full life cycle A1 - D



EPDs and independent third party verification are an integral part of our sustainability principles.

Low Carbon BioBase® backing



Recycled Content

77%

*minimum content

BioBase® is our low carbon backing system, made using locally sourced recycled organic materials. Combined with 100% organic, non-vinyl polymer binders and fillers.

Take Back Service



Total Landfill Waste

0%

Working with our partners, we work to find your used carpet tiles a new home, such as helping local community organisations requiring low cost flooring.





alaska® alpine & amber



alaska® cabin & husky

Adhesive Free Installation to Facilitate Flooring Reuse

Burmatex® achieves circular installation with IOBAC

Adhesive free installation with IOBAC allows carpet tiles to be held securely in place, yet are uplifted cleanly and damage-free, enabling easier reuse and recycling.

Scan QR code for the **Burmatex®** Installation Guide



Magnetic and dry-tack



IOBAC MagTabs®

Magnetic on one side and dry-tack on the other, IOBAC MagTabs work by locking carpet tiles tightly together using a unique 2-dimensional grip onto magnetically receptive sub-floors such as access flooring.



Double-sided adhesive



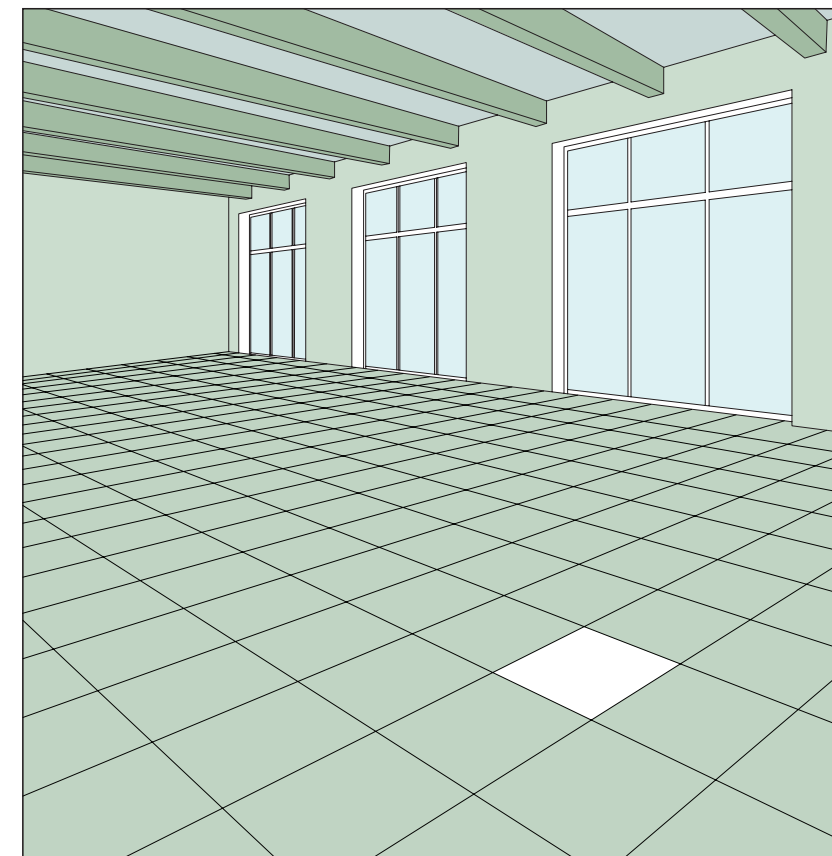
IOBAC Tab-It®

Double-sided dry-tack adhesive tabs for cleanly fixing and uplifting carpet tiles on most prepared sub-floors.

Design for Deconstruction

To enable future reuse, repurposing, or recycling

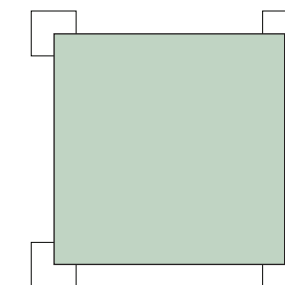
The Construction industry is currently in transition from a linear path to a circular economy, but this process is still at an early stage. Design Deconstruction plays a vital role in a buildings' circularity and a considered approach in selective dismantlement of building components for provision of its future reuse, repurposing or indeed recycling, is imperative in this change.



Supportive measures:

- Products supported by specific, full LCA EPD's
- Products with low GWP
- Products that are Carbon Neutral*
- Products with high recycled content ISO 14021
- Products with recyclable components
- Products compatible with reuse and circular installation

The different colours show different building materials that can be deconstructed and treated separately.



IOBAC MagTabs® and Tab-It® enable carpet tiles to be uplifted cleanly and damage-free, enabling easier reuse and recycling.

technical specification

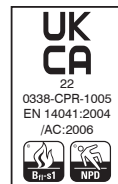
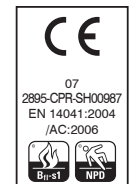
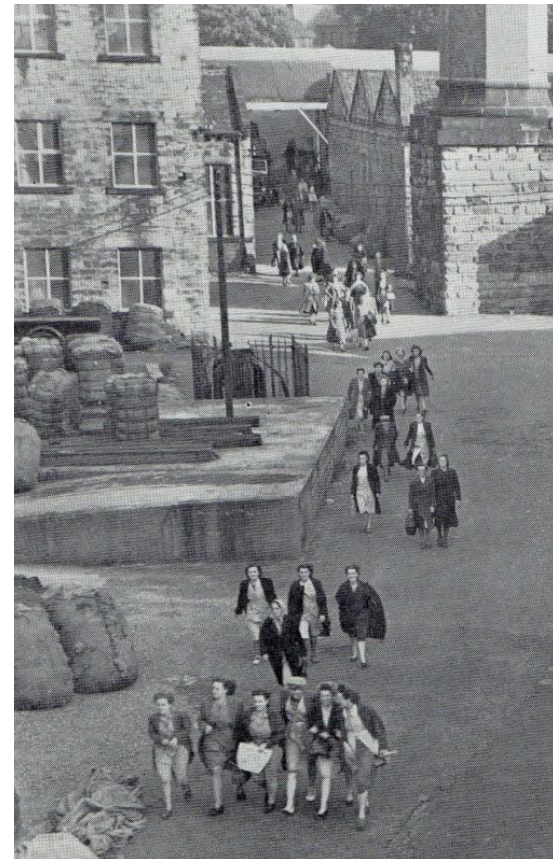
Yarn	100% Econyl® regenerated recyclable yarn
Dimensions	50cm x 50cm
Pile Weight	800g/m ²
Total Weight	4200g/m ²
Total Thicknes	7.5mm
Backing	BioBase® recycled backing (recycled BS EN ISO 14021)
Wear Classification	Class 33 heavy commercial use (BS EN 1307)
Castor Chair Rating	Pass - continuous use (BS EN 985)
Flammability	Euroclass Bfl-s1
Static Loading	BS 4939: 1987 (2003) Recovery >80% (24hrs)
Reduction in Impact Noise	BS EN ISO 10140-3:2010 22dB
Warranty	15 years
Tiles per Box	20 (5m ²)

Burmatex®

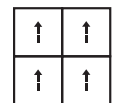
MANUFACTURERS OF CREATIVE FLOORING 



Burmatex®, created in 1967, is one of the UK's leading designers and manufacturers of contract carpet tiles. Our eco friendly portfolio focuses on the design and creation of innovative products to meet the needs of architects, specifiers and contractors. Get in touch to discuss our design service for your project.



Installation Method:



monolithic

Head Office

Victoria Mills, The Green
Ossett
West Yorkshire
WF5 0AN
United Kingdom

Tel: +44 (0) 1924 262525
Email: projects@burmatex.co.uk

www.burmatex.co.uk

Made from **eco laminate** and **100% recyclable paper**

Issue: September 2025