



eco-cordiale® clouds, atlantis, sky, ink

eco-cordiale®



carbon neutral carpet tiles & sheet

Burmatex®

MANUFACTURERS OF CREATIVE FLOORING 

eco-cordiale®

Fibre bonded carpet tiles & sheet made in the UK 

Made using our innovative **ecofibre™**, a blend of **recycled, regenerated** and virgin fibres and our unique **BioBase®** recycled backing, **eco-cordiale®** is **carbon neutral**.

Featuring an extended 44 colour palette, **eco-cordiale®** is available in both fine ribbed carpet tile and sheet, is easy to maintain and features **anti-fray** and **anti-ravel** technology.

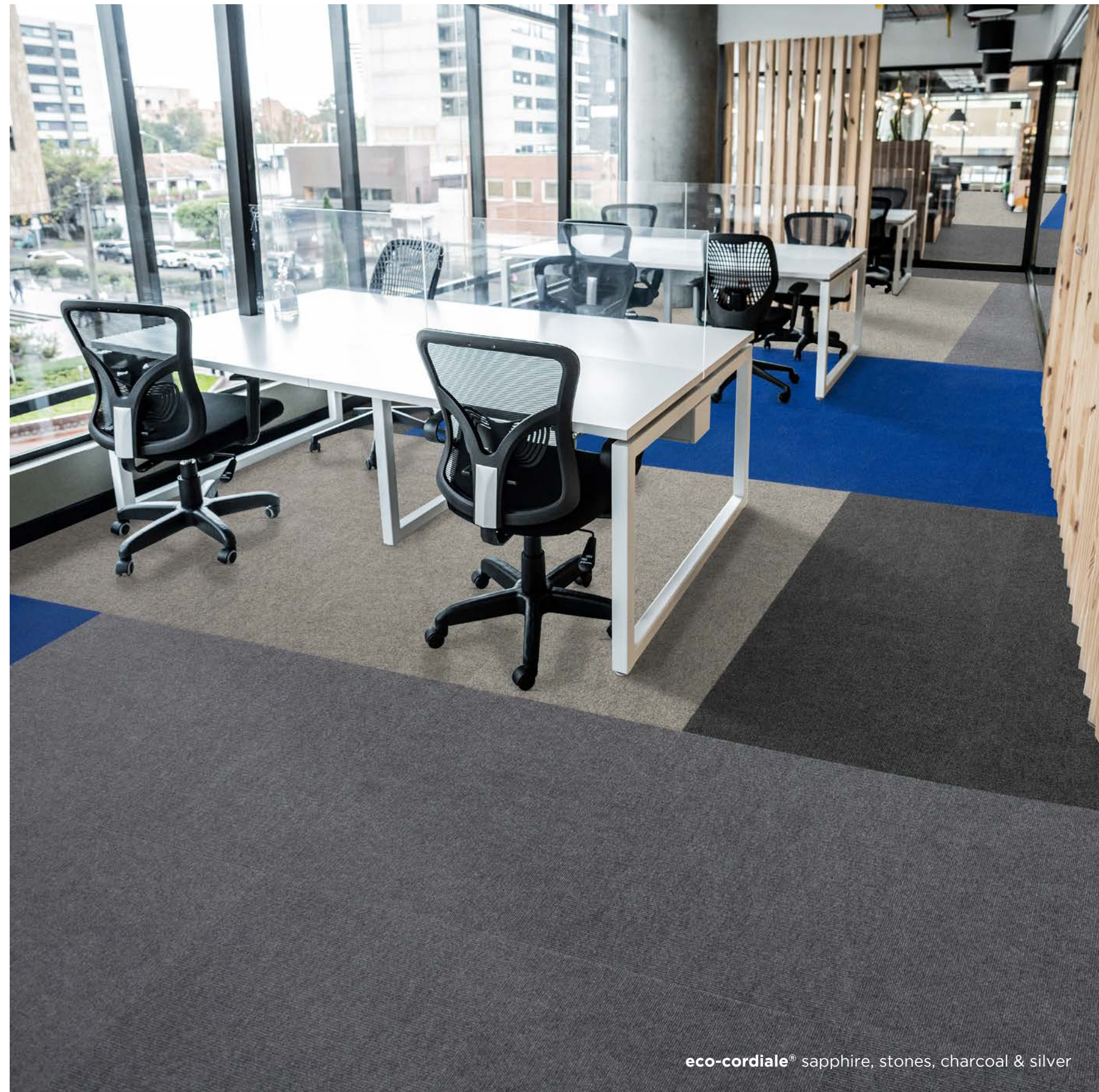
eco₂matters®

We are committed to achieving Net Zero through the continual removal of carbon from our products and processes. We believe that what we do matters, that the ecology of our planet matters, and that **eco₂matters®**

To find out more visit www.burmatex.co.uk/eco2matters/







colour palette

eco-cordiale® has 44 colour options



diamond
LRV: Y 11.70



storm
LRV: Y 9.05



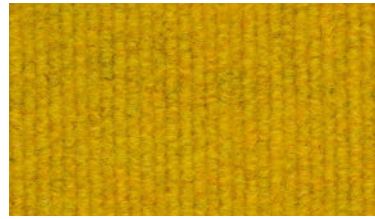
sky
LRV: Y 6.67



stones
LRV: Y 14.76



sagebrush
LRV: Y 8.16



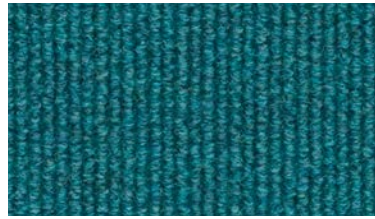
sun
LRV: Y 16.75



mauve
LRV: Y 9.62



lavender
LRV: Y 5.32



aqua
LRV: Y 9.40



silver
LRV: Y 8.32



horizon
LRV: Y 8.23



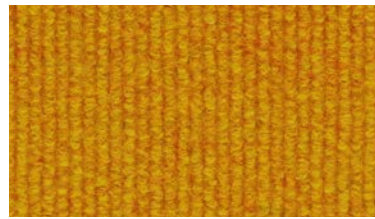
sapphire
LRV: Y 3.44



honey
LRV: Y 13.24



fern
LRV: Y 7.37



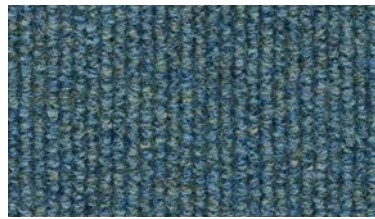
saffron
LRV: Y 21.24



pink
LRV: Y 4.77



lilac
LRV: Y 7.84



peacock
LRV: Y 6.72



clouds
LRV: Y 6.07



denim
LRV: Y 5.83



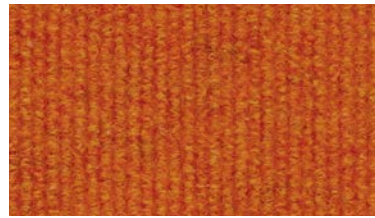
atlantis
LRV: Y 3.79



sand
LRV: Y 7.48



lime
LRV: Y 8.83



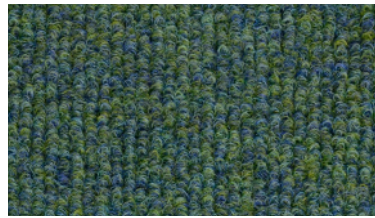
tangerine
LRV: Y 14.14



rose
LRV: Y 5.73



indigo
LRV: Y 3.20



jade
LRV: Y 7.12



charcoal
LRV: Y 3.19



ocean
LRV: Y 4.10



ultramarine
LRV: Y 3.85



earth
LRV: Y 4.51



emerald
LRV: Y 4.97



crimson
LRV: Y 5.88



orchid
LRV: Y 3.72



violet
LRV: Y 2.71



ebony
LRV: Y 2.35



ink
LRV: Y 2.73



midnight
LRV: Y 2.27



electric
LRV: Y 5.36



sea
LRV: Y 6.59



paprika
LRV: Y 4.52



cherry
LRV: Y 2.93



brown
LRV: Y 3.02



turquoise
LRV: Y 5.02



eco₂matters®

Carbon Status:

 **carbon neutral**
* Offset at source and independently 3rd party verified.
Details available upon request.

Yarn Description:

ecofibre™

Backing:

 **BioBase®**
* Recycled content BS EN ISO 14021

Global Warming Potential / kg CO₂ eq:

 **independently
3rd party verified** **3.69***
* Awaiting full verification

eco-cordiale® tile

Total Recycled Content of Product:

63.0%
BS EN ISO 14021

Installation Waste:

3-4%
* Based on average installation

Wear Classification:

Class 33
heavy commercial use (BS EN 1307)

Sound Absorption Coefficient:

Class E .02
BS EN 354:2003

Warranty:

15 years

Technology:

 **Anti-Fray &
Anti-Ravel**

Castor Chair Rating:

Pass - continuous use
(BS EN 985)

Impact Sound Insulation:

18dB
BS EN ISO 10140-3:2010



eco₂matters®

Carbon Status:

 carbon neutral
* Offset at source and independently 3rd party verified.
Details available upon request.

Yarn Description:

ecofibre™

Global Warming Potential / kg CO₂ eq:

 independently
3rd party verified **2.50** *
* Awaiting full verification

eco-cordiale® sheet

Total Recycled Content of Product:

18.3%
BS EN ISO 14021

Installation Waste:

3-4%
* Based on average installation

Wear Classification:

Class 33
heavy commercial use (BS EN 1307)

Sound Absorption Coefficient:

Class E .02
BS EN 354:2003

Warranty:

15 years

Technology:

 Anti-Fray &
Anti-Ravel

Castor Chair Rating:

Pass - continuous use
(BS EN 985)

Impact Sound Insulation:

18dB
BS EN ISO 10140-3:2010

Environmental Product Declarations



Independent product specific
EPD of full life cycle A1 - D



EPDs and independent third party verification are an integral part of our sustainability principles.

Low Carbon BioBase® backing



Recycled Content

77%

*minimum content

BioBase® is our low carbon backing system, made using locally sourced recycled organic materials. Combined with 100% organic, non-vinyl polymer binders and fillers.

Take Back Service



Total Landfill Waste

0%

Working with our partners, we work to find your used carpet tiles a new home, such as helping local community organisations requiring low cost flooring.



eco-cordiale®

eco-cordiale® combines extreme durability with excellent sustainability credentials to make it the ideal choice for use in environments such as schools, colleges, and universities.



eco-cordiale® clouds, diamond, sky, atlantis & ink



eco-cordiale® storm, horizon & charcoal

Adhesive Free Installation to Facilitate Flooring Reuse

Burmatex® achieves circular installation with IOBAC

Adhesive free installation with IOBAC allows carpet tiles to be held securely in place, yet are uplifted cleanly and damage-free, enabling easier reuse and recycling.

Scan QR code for the Burmatex® Installation Guide



Magnetic and dry-tack



IOBAC MagTabs®

Magnetic on one side and dry-tack on the other, IOBAC MagTabs work by locking carpet tiles tightly together using a unique 2-dimensional grip onto magnetically receptive sub-floors such as access flooring.



Double-sided adhesive



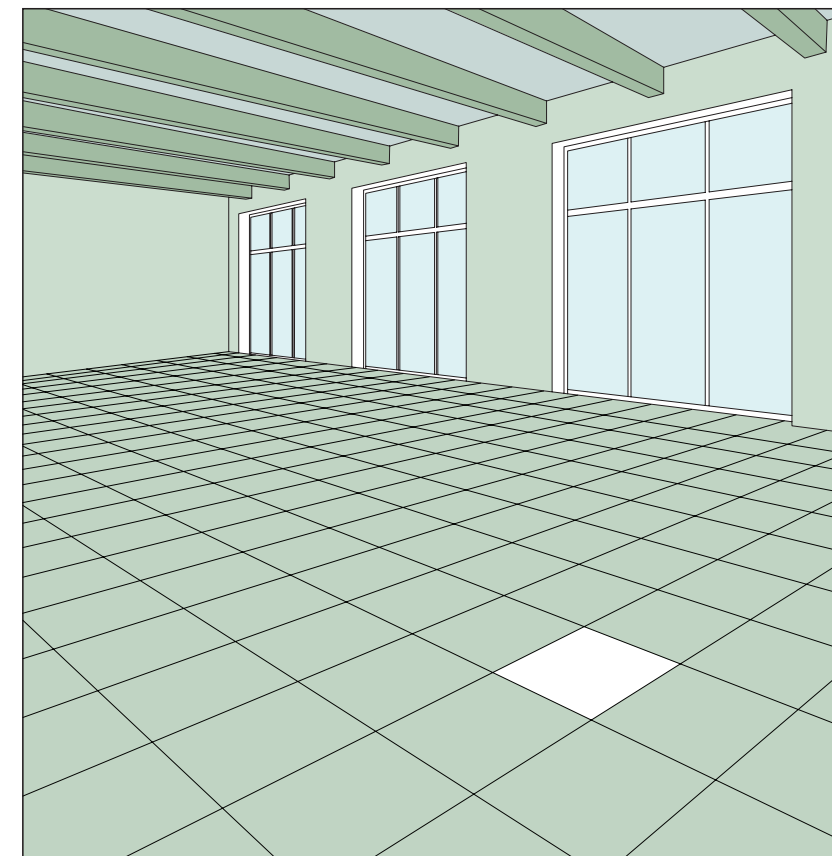
IOBAC Tab-It®

Double-sided dry-tack adhesive tabs for cleanly fixing and uplifting carpet tiles on most prepared sub-floors.

Design for Deconstruction

To enable future reuse, repurposing, or recycling

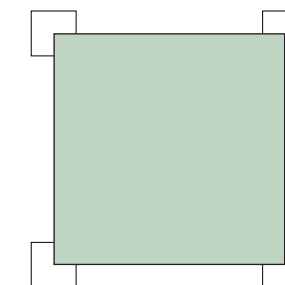
The Construction industry is currently in transition from a linear path to a circular economy, but this process is still at an early stage. Design Deconstruction plays a vital role in a buildings' circularity and a considered approach in selective dismantlement of building components for provision of its future reuse, repurposing or indeed recycling, is imperative in this change.



Supportive measures:

- Products supported by specific, full LCA EPD's
- Products with low GWP
- Products that are Carbon Neutral*
- Products with high recycled content ISO 14021
- Products with recyclable components
- Products compatible with reuse and circular installation

The different colours show different building materials that can be deconstructed and treated separately.



IOBAC MagTabs® and Tab-It® enable carpet tiles to be uplifted cleanly and damage-free, enabling easier reuse and recycling.

technical specification

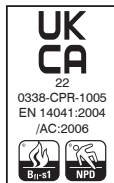
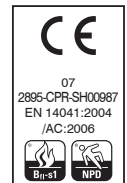
| | Tile | Sheet |
|----------------------------------|--|--|
| Fibre Composition | ecofibre™ (75% polypropylene 15% regenerated nylon 10% recycled polyester) | ecofibre™ (75% polypropylene 15% regenerated nylon 10% recycled polyester) |
| Dimensions | 50cm x 50cm | 30m x 2m |
| Pile Weight | 950g/m ² | |
| Total Weight | 4200g/m ² | 950g/m ² |
| Total Thickness | 7.8mm | 6mm |
| Backing | BioBase® recycled backing (recycled BS EN ISO 14021) | |
| Wear Classification | Heavy Contract | Heavy Contract |
| Castor Chair Rating | Pass - continuous use (BS EN 985) | Pass - continuous use (BS EN 985) |
| Flammability | Euroclass Bfl-s1 | Euroclass Bfl-s1 |
| Static Loading | BS 4939: 1987 (2003) Recovery >80% (24hrs) | BS 4939: 1987 (2003) Recovery >80% (24hrs) |
| Reduction in Impact Noise | BS EN ISO 10140-3:2010 18dB | BS EN ISO 10140-3:2010 1823dB |
| Warranty | 15 years | 15 years |
| Tiles / planks per Box | 20 (5m ²) | |

Burmatex®

MANUFACTURERS OF CREATIVE FLOORING 



Burmatex®, created in 1967, is one of the UK's leading designers and manufacturers of contract carpet tiles. Our eco friendly portfolio focuses on the design and creation of innovative products to meet the needs of architects, specifiers and contractors. Get in touch to discuss our design service for your project.



FM 01440 EMS 784147

Burmatex[®]

MANUFACTURERS OF CREATIVE FLOORING 

eco₂matters[®]

Head Office

Victoria Mills, The Green
Ossett
West Yorkshire
WF5 0AN
United Kingdom

Tel: +44 (0) 1924 262525
Email: projects@burmatex.co.uk

www.burmatex.co.uk

Issue: February 2025